

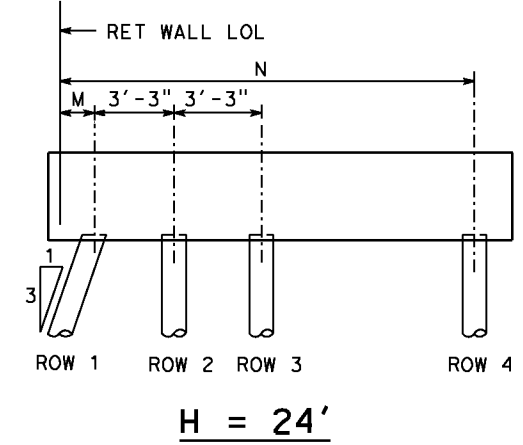
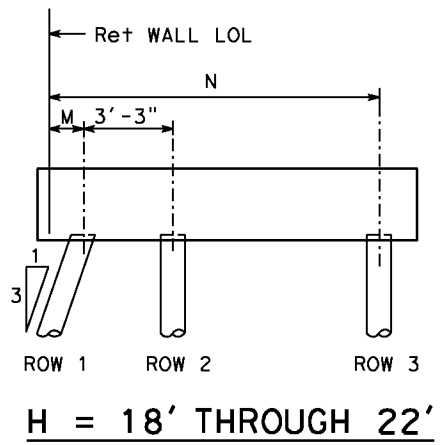
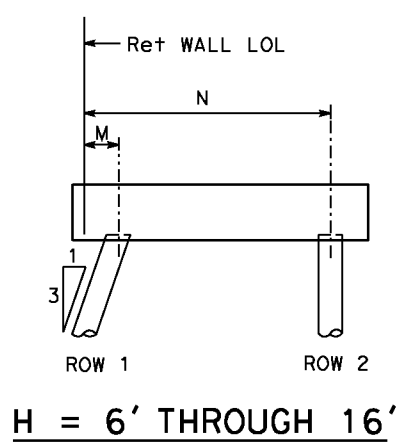
DIST	COUNTY	ROUTE	POST MILES TOTAL PROJECT	SHEET No.	TOTAL SHEETS
X	X	X	X	X	X

REGISTERED CIVIL ENGINEER DATE \_\_\_\_\_

PLANS APPROVAL DATE \_\_\_\_\_

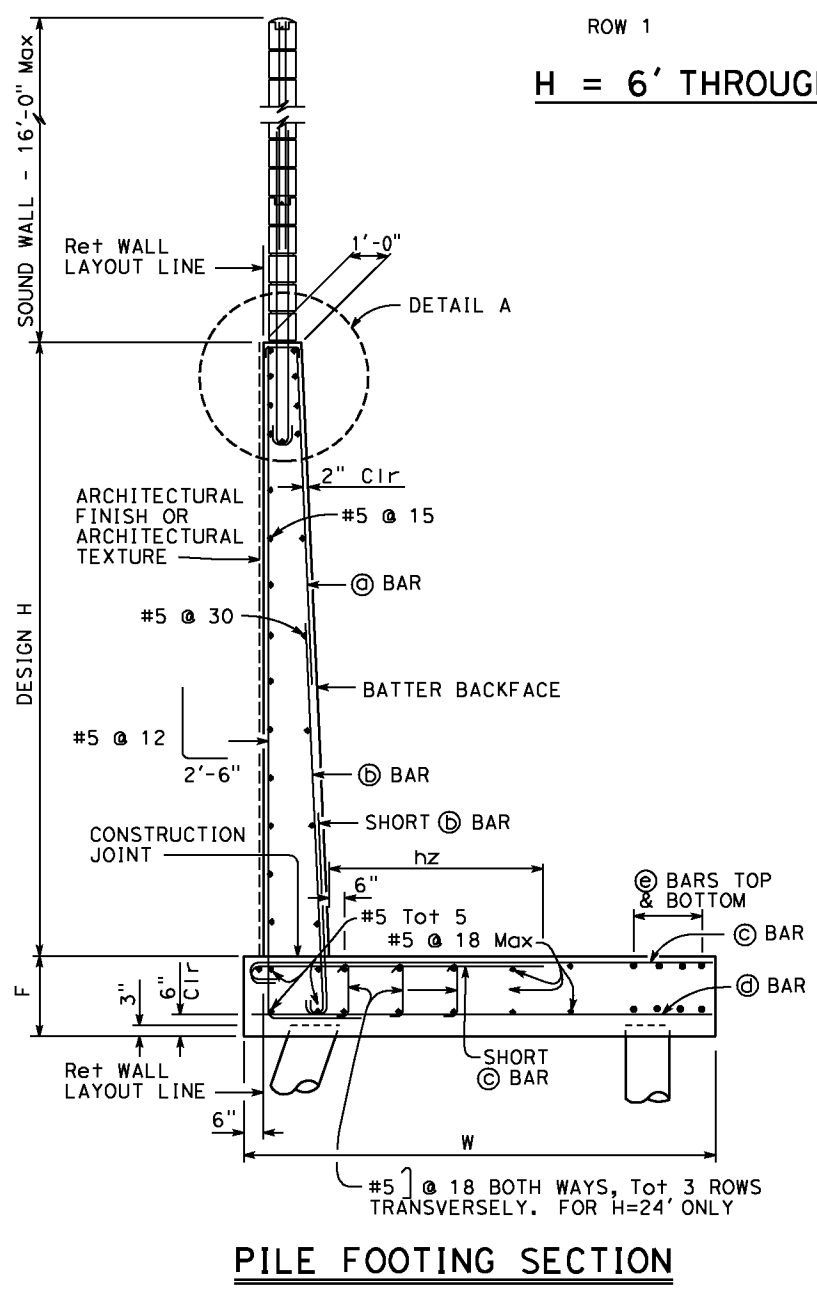
The State of California or its officers or agents shall not be responsible for the accuracy or completeness of electronic copies of this plan sheet.

REGISTERED PROFESSIONAL ENGINEER  
No. X  
Exp. X  
CIVIL  
STATE OF CALIFORNIA



**PILE PATTERN**  
No scale

- NOTES:
- All piles are class 90 concrete piles.
  - Pile batter shown are 1:3.
  - Minimum distance between center pile and edge of footing is 1'-6".
  - Lateral resistance of each pile:  
30 kip for strength limit states.  
40 kip for extreme limit states.
  - Maximum spacing between piles is shown in the table. Reduce to suit the length of footing.
  - Minimum distance between any two piles is 3'-0". Reduce to suit the length of footing.
  - For sound wall and retaining wall architectural finish or texture, see details elsewhere in Project Plans.
  - For details not shown and drainage notes, see **B3-5**.
  - Footing cover, 1'-6" minimum.
  - For sound wall and reinforcement see "SOUND WALL - MASONRY BLOCK ON RETAINING WALL" sheets.



**PILE FOOTING SECTION**  
No scale  
All piles are not shown

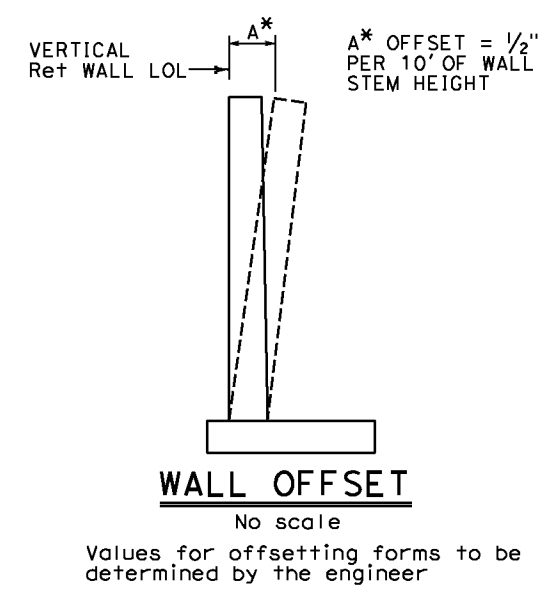


TABLE OF WALL DIMENSIONS, PILE SPACINGS & REINFORCING STEEL

DESIGN H	6'	8'	10'	12'	14'	16'	18'	20'	22'	24'
W	8'-9"	9'-0"	9'-3"	9'-9"	10'-3"	10'-9"	12'-0"	13'-0"	14'-6"	16'-0"
F PILE FOOTING	1'-6"	1'-6"	1'-6"	1'-6"	1'-9"	2'-0"	2'-0"	2'-6"	2'-9"	2'-9"
M	1'-0"	1'-0"	1'-0"	1'-0"	1'-0"	1'-0"	1'-0"	1'-0"	1'-0"	1'-0"
N	6'-9"	7'-0"	7'-3"	7'-9"	8'-3"	8'-9"	10'-0"	11'-0"	12'-6"	14'-0"
ROW 1 SPACING	8'-6"	7'-3"	6'-3"	5'-3"	4'-6"	3'-9"	3'-9"	3'-9"	3'-9"	3'-9"
ROW 2 SPACING	13'-6"	12'-0"	11'-6"	10'-3"	9'-3"	6'-6"	7'-0"	6'-0"	4'-0"	3'-9"
ROW 3 SPACING							7'-6"	6'-0"	5'-6"	5'-6"
ROW 4 SPACING										4'-6"
BATTER	0	1/2:12	1/2:12	1/2:12	1/2:12	1/2:12	5/8:12	5/8:12	5/8:12	3/4:12
⊙ BARS						#7@15	#7@12	#7@12	#8@12	#6@6
⊕ BARS	#8@12	#8@12	#7@6	#7@6	#7@6	#9@7.5	#9@6	#10@6	#10@6	#8@6 ♂
ha			5'-0"	6'-0"	7'-0"	7'-0"	6'-0"	7'-0"	7'-0"	7'-6"
hb						11'-6"	12'-0"	13'-3"	16'-0"	15'-6"
⊙ BARS	#6@6	#6@6	#7@6	#8@6	#9@6	#10@7.5	#8@6 ♂	#9@6 ♂	#9@6 ♂	#10@6 ♂
hz	3'-6"	3'-6"	3'-6"	4'-0"	4'-3"	7'-0"	4'-9"	5'-6"	6'-3"	7'-6"
⊕ BARS	#6@12	#5@12	#5@12	#5@12	#5@12	#5@15	#5@12	#5@12	#6@12	#5@12
⊙ BARS	8-#8@11	8-#7@11	8-#7@11	8-#7@13	8-#7@16	10-#5@15	8-#5@12	#5@18	#5@18	#5@18

- NOTES:
- ♂ indicates 2 bar bundle
  - Total ⊙ bars are top and bottom combined

STANDARD DRAWING

FILE NO. **xs14-360-1**

APPROVAL DATE July 2011

STATE OF CALIFORNIA  
DEPARTMENT OF TRANSPORTATION

DIVISION OF ENGINEERING SERVICES

BRIDGE NO. X

POST MILE X

**RETAINING WALL TYPE 5SWP-DETAILS NO. 1**