

DIST	COUNTY	ROUTE	POST MILES TOTAL PROJECT	SHEET No.	TOTAL SHEETS
X	X	X	X	X	X

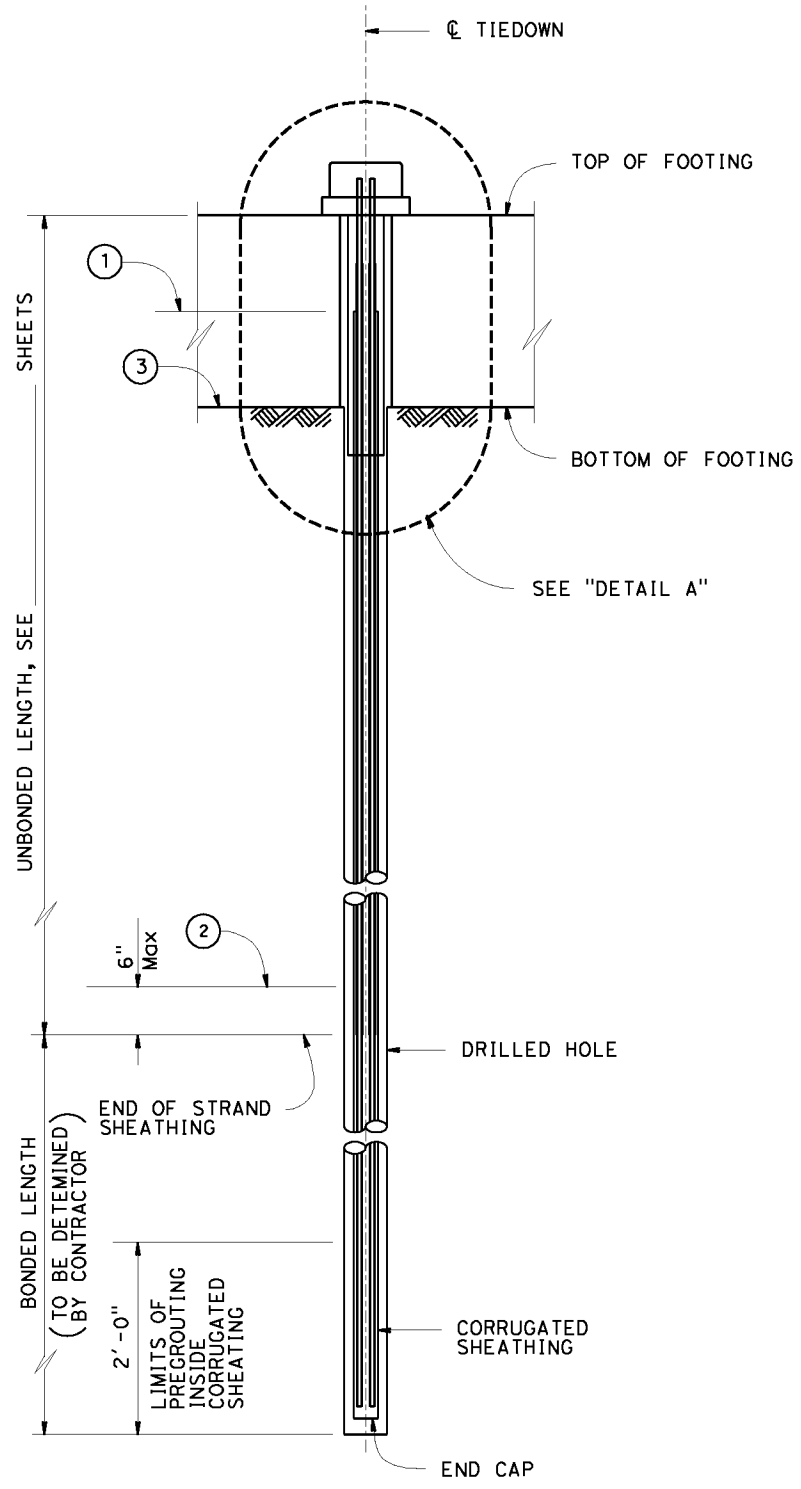
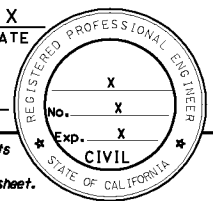
REGISTERED CIVIL ENGINEER	DATE
	X

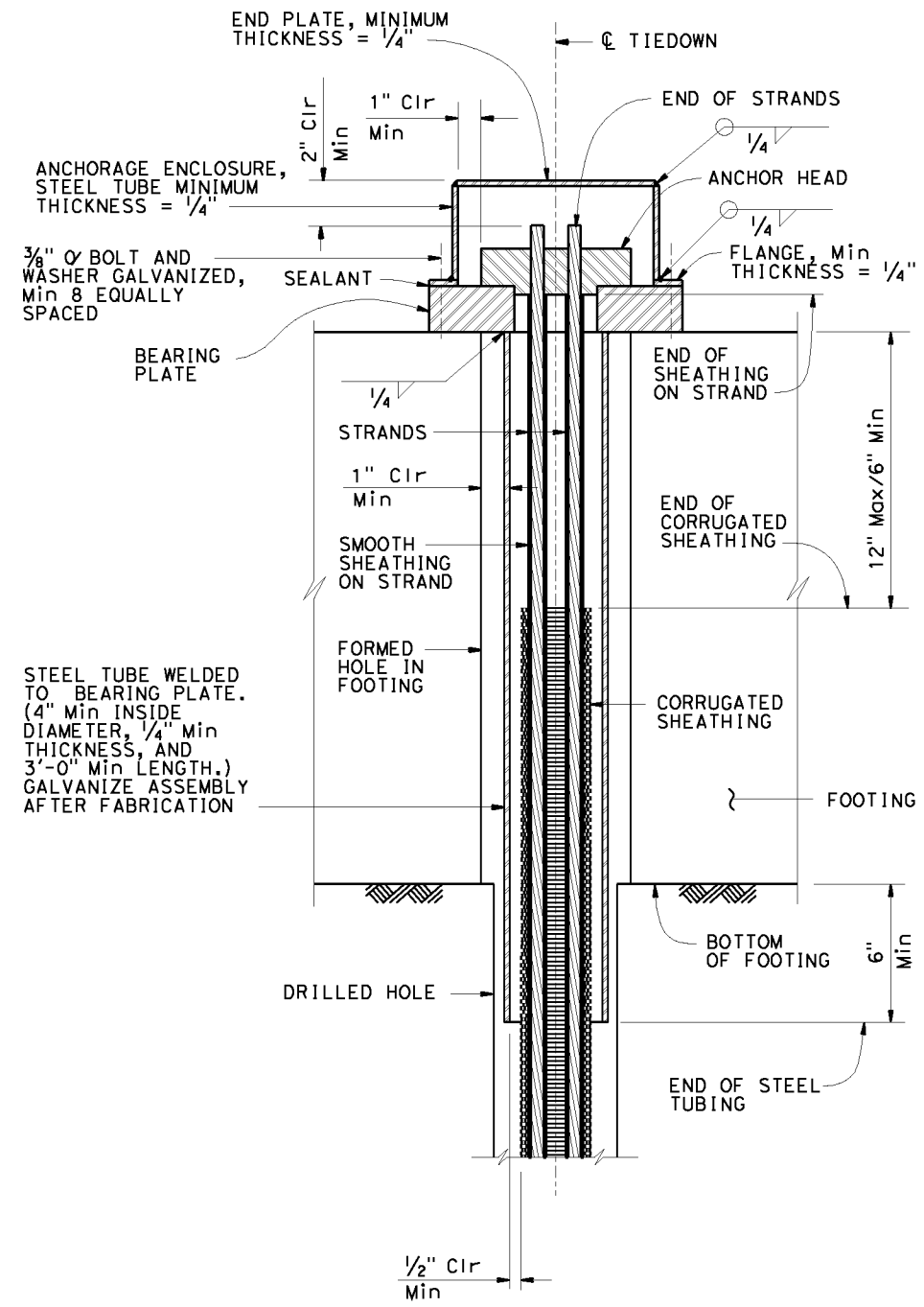
PLANS APPROVAL DATE

The State of California or its officers or agents shall not be responsible for the accuracy or completeness of electronic copies of this plan sheet.



**TIEDOWN ANCHOR DETAILS (STRANDS)**  
SCALE 1"=1'



**DETAIL A**  
Scale 3"=1'

**GENERAL NOTES-TIEDOWN ANCHOR**

PRESTRESSING (TIEDOWNS):  
 BARS- ASTM Designation: A722 Type II  
 STRANDS-ASTM Designation: A416  
 T= DESIGN FORCE PER TIEDOWN (kips)  
 fpu= MINIMUM TENSILE STRENGTH OF PRESTRESSING STEEL (ksi)

As= MINIMUM CROSS SECTIONAL AREA OF PRESTRESSING STEEL IN TIEDOWN TENDON (square inches)

As (min)=  $\frac{1.5T}{0.75 fpu}$

**NOTES:**

1. Anchorage enclosure shall have provisions to allow injecting grout at low end and venting at high end. Galvanize enclosure after fabrication.
2. Alternative anchor enclosure shown on sheet "TIEDOWN ANCHOR DETAILS No.2" sheet
- ① Level of initial grouting inside corrugated sheathing
- ② Level of initial grouting in drilled hole.
- ③ Level of secondary grouting in drilled hole.

STANDARD DRAWING		STATE OF CALIFORNIA DEPARTMENT OF TRANSPORTATION		DIVISION OF ENGINEERING SERVICES		BRIDGE NO. X		X	
FILE NO. <b>xs12-030-1x</b>	APPROVAL DATE <u>July 2011</u>					POST MILE X		<b>TIEDOWN ANCHOR DETAILS NO. 1</b>	
DS OSD 2147A (ENGLISH STANDARD DRAWING "XS" BORDER REV. [02-02-11])		ORIGINAL SCALE IN INCHES FOR REDUCED PLANS		UNIT: X PROJECT NUMBER & PHASE: X		CONTRACT NO.: X		DISREGARD PRINTS BEARING EARLIER REVISION DATES	
		0 1 2 3						REVISION DATES	
								SHEET OF X X	