

DIST	COUNTY	ROUTE	POST MILES TOTAL PROJECT	SHEET No.	TOTAL SHEETS
X	X	X	X	X	X

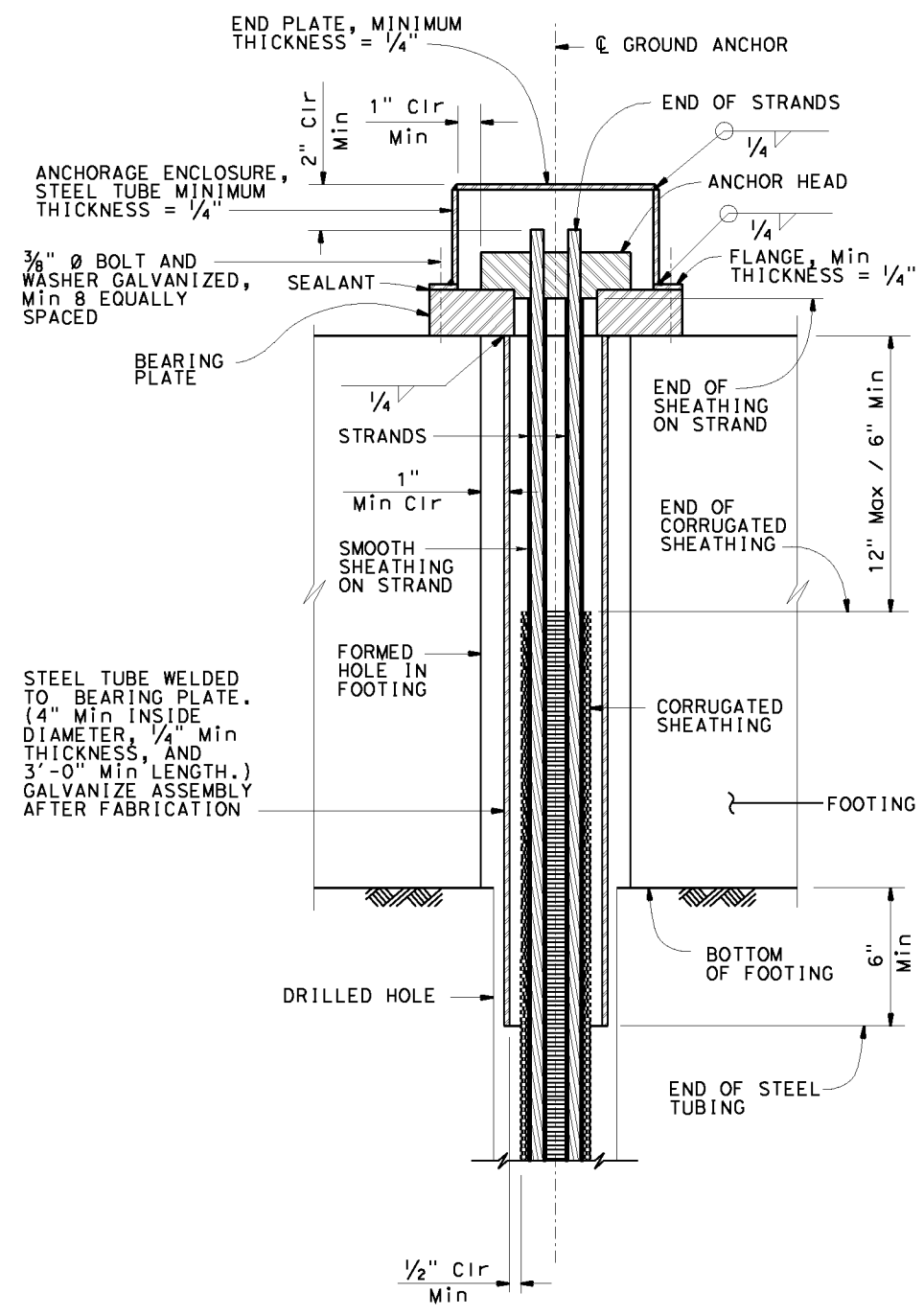
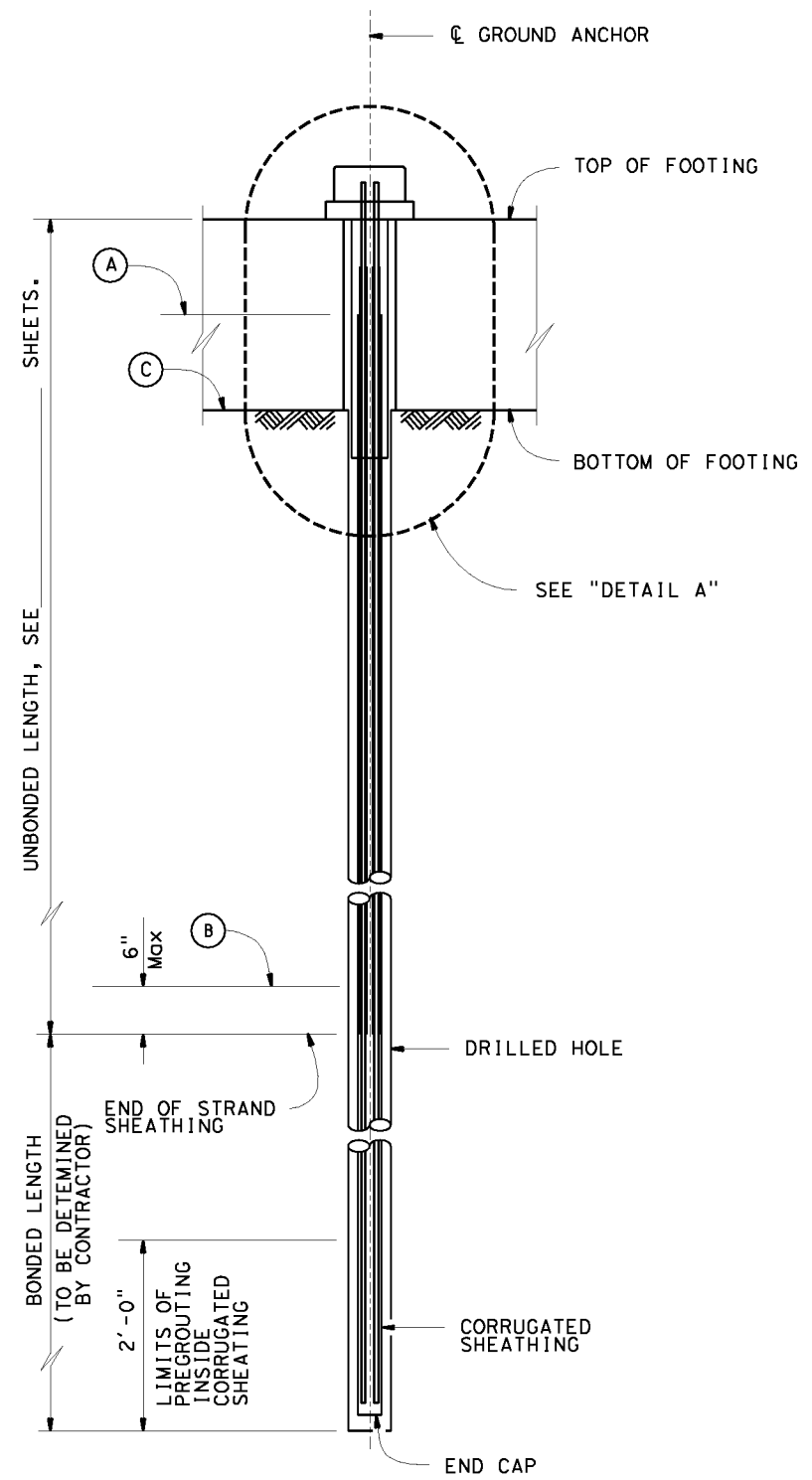
  

REGISTERED CIVIL ENGINEER	X
DATE	

PLANS APPROVAL DATE	
No.	X
Exp.	X
CIVIL	

*The State of California or its officers or agents shall not be responsible for the accuracy or completeness of electronic copies of this plan sheet.*



STEEL TUBE WELDED TO BEARING PLATE. (4" Min INSIDE DIAMETER, 1/4" Min THICKNESS, AND 3'-0" Min LENGTH.) GALVANIZE ASSEMBLY AFTER FABRICATION

**DETAIL A**  
3" = 1'-0"

**GENERAL NOTES**

DESIGN: AASHTO LRFD Bridge Design Specifications, 4th edition with California Amendments.

PRESTRESSING STEEL (GROUND ANCHORS):

STRANDS - ASTM Designation: A416  
 Tp = Factored test load per tendon (Kips)  
 fpu = Minimum tensile strength of prestressing steel (ksi)

As = Minimum cross sectional area of prestressing steel in tendon (square inches)

$$As \text{ (Min)} = \frac{1.0 Tp}{0.75 fpu} \text{ (Strand)}$$

**NOTES:**

1. Anchorage enclosure shall have provisions to allow injecting grout at low end and venting at high end. Galvanize enclosure after fabrication.

2. Alternative anchor enclosure shown on sheet "VERTICAL GROUND ANCHOR DETAILS No. 2" sheet

(A) Level of initial grouting inside corrugated sheathing

(B) Level of initial grouting in drilled hole

(C) Level of secondary grouting in drilled hole

**GROUND ANCHOR TENDON DETAILS (STRANDS)**  
1" = 1'-0"

STANDARD DRAWING		STATE OF CALIFORNIA		DIVISION OF ENGINEERING SERVICES		BRIDGE NO. X		X	
FILE NO. xs12-030-1	APPROVAL DATE July 2011	DEPARTMENT OF TRANSPORTATION		PROJECT NUMBER & PHASE: X		POST MILE X		VERTICAL GROUND ANCHOR DETAILS NO. 1	
DS OSD 2147A (ENGLISH STANDARD DRAWING "XS" BORDER REV. [02-02-11])		ORIGINAL SCALE IN INCHES FOR REDUCED PLANS		UNIT: X		CONTRACT NO.: X		DISREGARD PRINTS BEARING EARLIER REVISION DATES	
		0 1 2 3		REVISION DATES		SHEET X		OF X	