

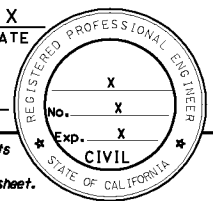
DIST	COUNTY	ROUTE	POST MILES TOTAL PROJECT	SHEET No.	TOTAL SHEETS
X	X	X	X	X	X

REGISTERED CIVIL ENGINEER	DATE
PLANS APPROVAL DATE	

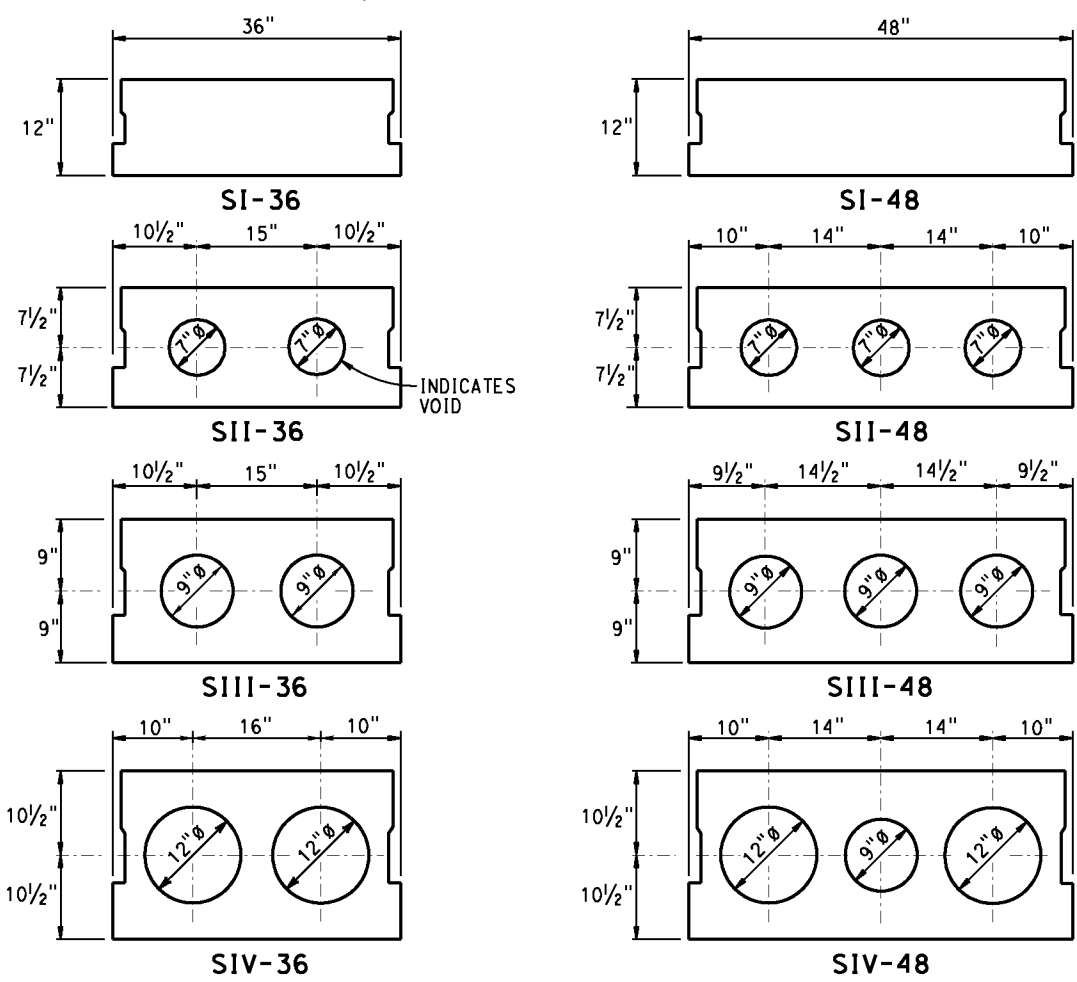
The State of California or its officers or agents shall not be responsible for the accuracy or completeness of electronic copies of this plan sheet.



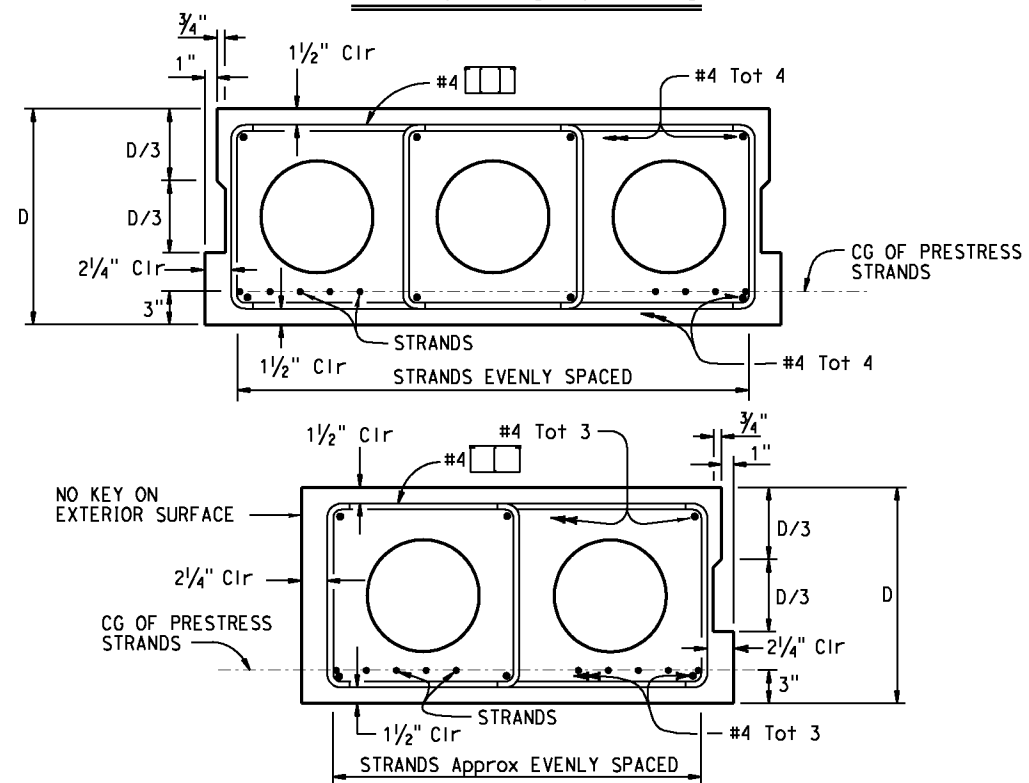
**GENERAL NOTES**

- The Jacking Force (P) is the jacking force required at the point of control along the span. The jacking force does not include any fabrication specific losses
- The maximum tensile stress in the prestressing steel upon release shall not exceed 75% of the specified minimum ultimate tensile strength of the prestressing steel
- The maximum temporary tensile stress (jacking stress) in the prestressing steel shall not exceed 80% of the specified minimum ultimate tensile strength of the prestressing steel
- Concrete Strength:  
f'ci is at time of initial stressing  
f'c is at 28 days
- Keyways to be filled with grout
- See other sheets for railing requirements
- Engineer should specify numbers (or percentage) of debond strands and debond length if required
- Wearing surface required on completed bridge deck surface
- Use epoxy coated reinforcement in Environmental Area III

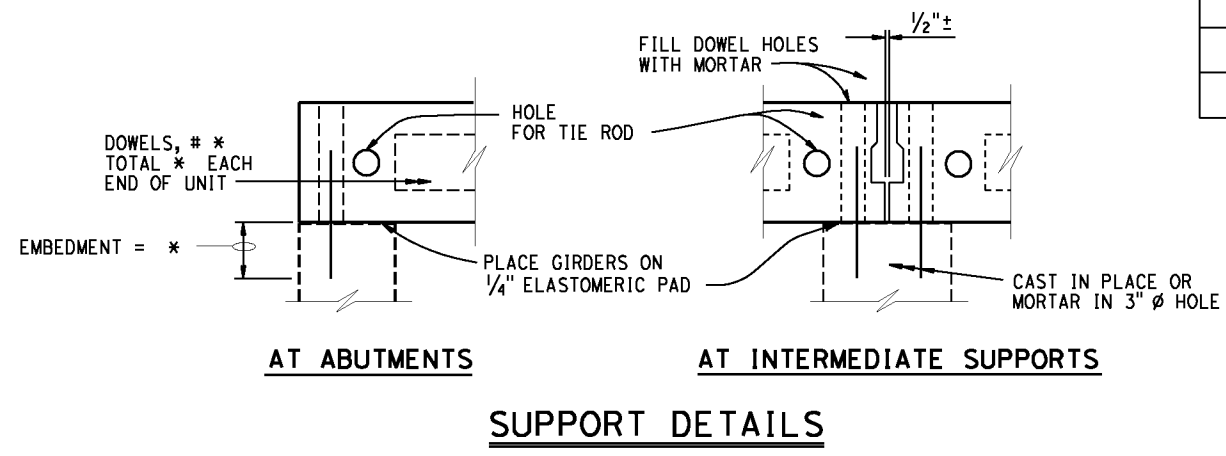
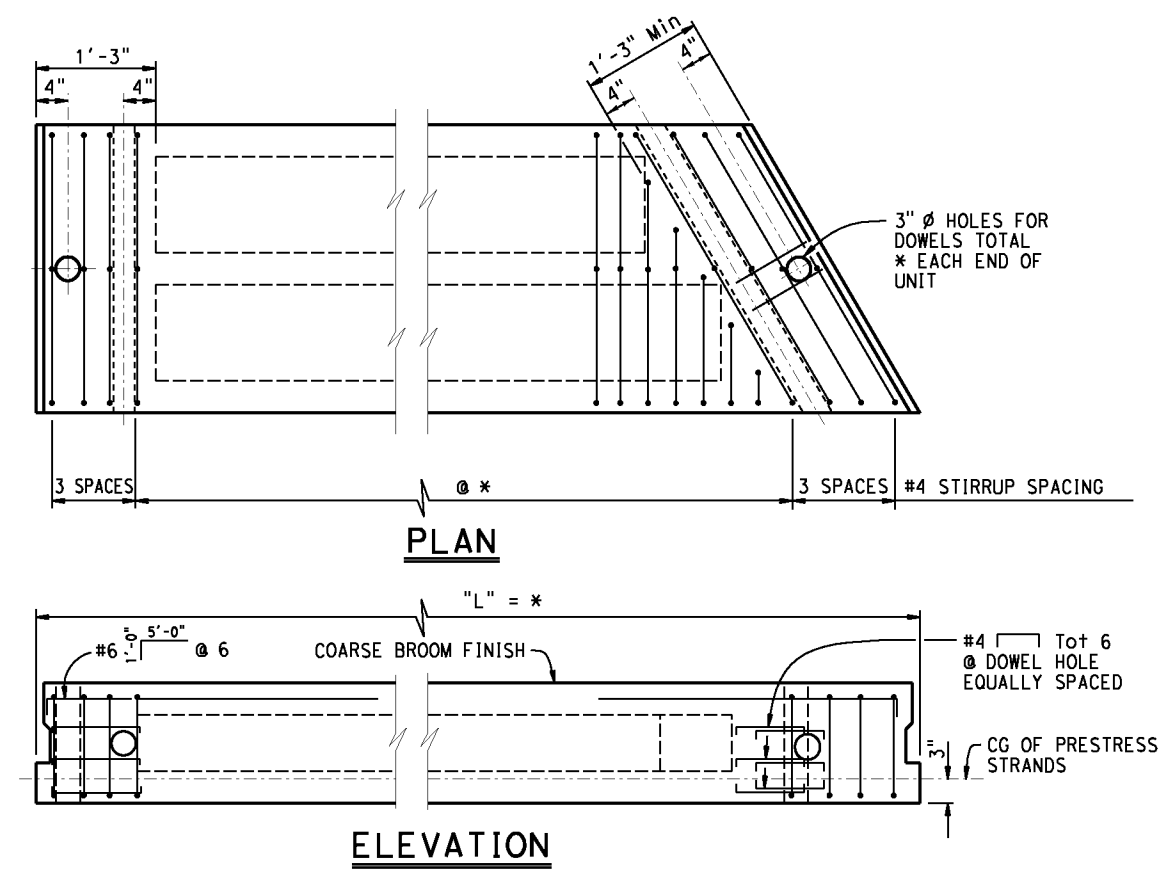
Girder location or designation and length	Jacking Force (P) in Kips	Concrete Strength (ksi)	
		f'ci	f'c



**TYPICAL SECTIONS**



**TYPICAL REINFORCEMENT**



**SUPPORT DETAILS**

\* Denotes Engineer to fill in these values, then delete this note

NO SCALE

STANDARD DRAWING	STATE OF CALIFORNIA DEPARTMENT OF TRANSPORTATION	DIVISION OF ENGINEERING SERVICES	BRIDGE NO.	X		
			POST MILE		X	
FILE NO. <b>xs1-125</b>	APPROVAL DATE July 2011	PC/PS CONCRETE SLAB GIRDER (WITHOUT CIP DECK)		SHEET	OF	
ORIGINAL SCALE IN INCHES FOR REDUCED PLANS		UNIT: X PROJECT NUMBER & PHASE: X	CONTRACT NO.: X	REVISION DATES	X	X

DATE PLOTTED => \$DATE USERNAME => \$USER