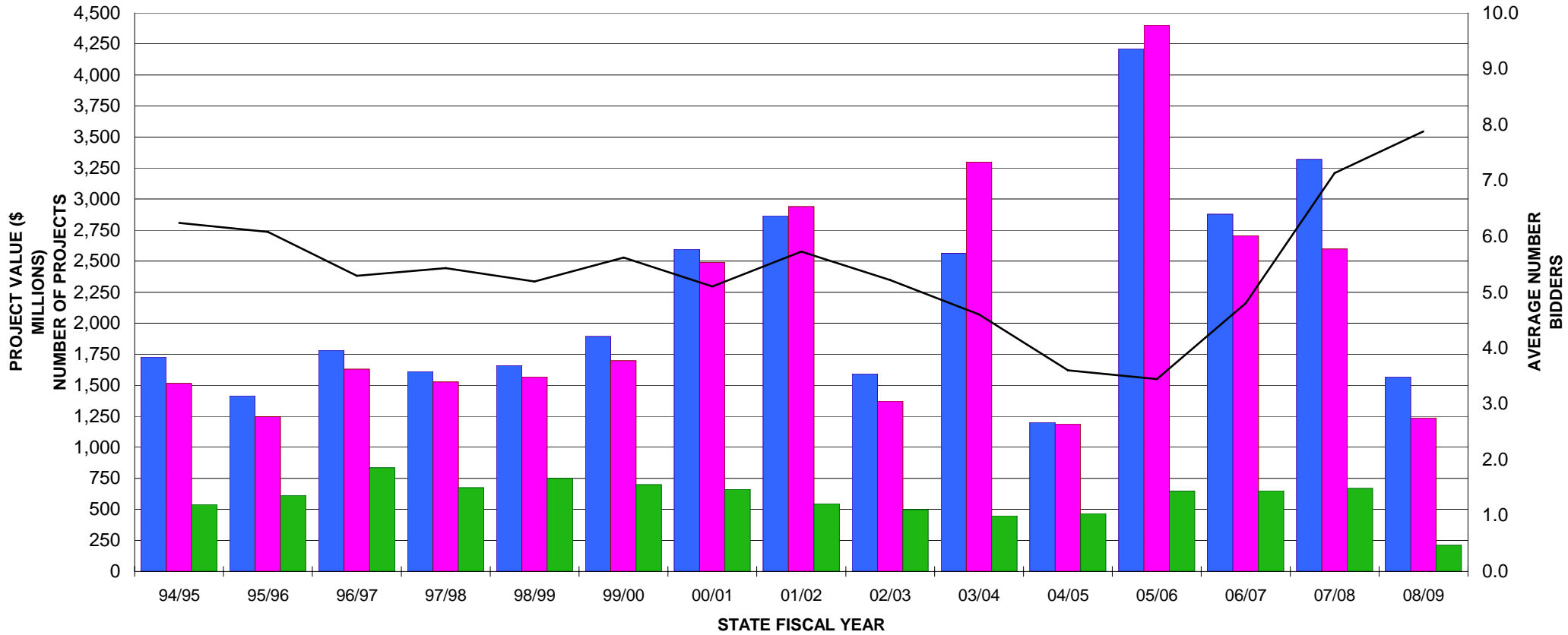
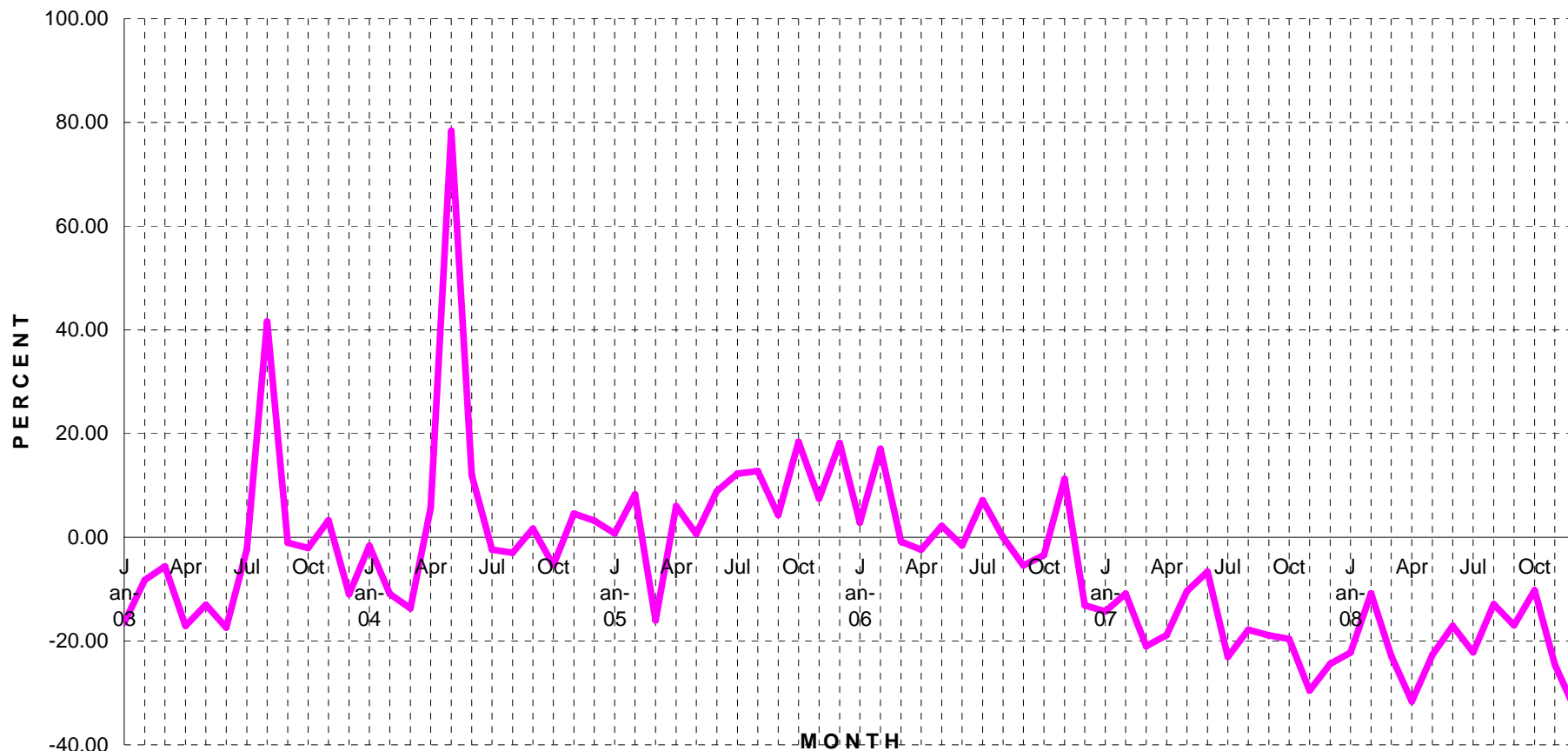


DIVISION OF ENGINEERING SERVICES - EXECUTIVE SUMMARY
LOW BID VS ENGINEER'S ESTIMATE
NUMBER OF PROJECTS & AVERAGE NUMBER OF BIDDERS
94/95 STATE FY THRU 08/09



■ Engineer's Estimate
 ■ Low Bid
 ■ Number of Projects
 — Average Number of Bidders

**DIVISION OF ENGINEERING SERVICES - EXECUTIVE SUMMARY
 PERCENTAGE DIFFERENCE BETWEEN LOW BID (Shown in red)
 AND ENGINEER'S ESTIMATE
 JANUARY 2003 THRU DECEMBER 2008**



DIVISION OF ENGINEERING SERVICES - EXECUTIVE SUMMARY
LOW BID VS ENGINEER'S ESTIMATE
AVERAGE NUMBER OF BIDDERS
JANUARY 2003 THRU DECEMBER 2008

