







**Table 5. Reasons for Pre-Pilot Program and Pilot Program Delays in the Project Delivery Process**

District	County	SHS Route	Project Name	NEPA Document Type	Points in NEPA Process Where Delays Occurred and Nature of Delays			
					PAED	ROW Certification	PS&E Complete	RTL
<b>Baseline Projects</b>								
<b>State Highway System EA/FONSI</b>								
1	Mendocino	101	Confusion Hill	FONSI	Lengthy Section 7 reviews by USFWS and NMFS	None identified	None identified	None identified
1	Humboldt	101	Alton Interchange	FONSI	Frontage road access issued required design modifications and additional environmental studies; lengthy Section 106 consultation	Condemnation required; Caltrans assumed local responsibilities for obtaining permits late in the process	Changes to drainage design required additional environmental analysis	Complex negotiations with California Coastal Commission and U.S. Army Corps of Engineers
1	Mendocino	128/253	269 Culverts	FONSI	Multiple project locations required complex mitigation strategy; lengthy Section 7 review by USFWS			
3	Yolo/ Sacramento	275	Tower Bridge Sidewalks	FONSI	Lengthy discussions with FHWA regarding alternatives selection; impacts to historic bridge involved	None identified	None identified	None identified
3	Colusa	20	Moonbend	FONSI	Lengthy Section 7 review; project redesigned after wetland delineation conducted	None identified	None identified	None identified
3	Placer	28	Tahoe City-Kings Beach-State Line	FONSI	Lengthy Tahoe Regional Planning Agency reviews; delay in air quality conformity determination due to Regional Transportation Plan (RTP) amendment	Condemnation required	Complex utility conflict and relocation issues	Complex utility conflict and relocation issues
3	Butte	70	Ophir Road Interchange	FONSI	Lengthy NEPA/404 integration process		None identified	
4	Solano	12	Jameson Canyon Truck Climbing Lane	FONSI	Lengthy Section 7 review; delays in obtaining air quality conformity determination; funding-related delays	Late change in ROW requirements due to relocation of water lines	Change in project design due to relocation of water lines; two amended BOs required that delayed permitting	Spillover effect from delays in PS&E
4	Santa Clara/ San Benito	152	State Route 152/State Route 156 Improvement Project	FONSI	Multiple revisions of consultant-prepared technical studies and environmental document required	None identified	None identified	None identified
4	Contra Costa	4	Loveridge Road Interchange Loveridge-Somersville-Route 60	FONSI	Extensive revisions on consultant-prepared biological and cultural resources technical studies; funding- and project design-related delays			
4	San Mateo	92	Route 92 Curve Correction	FONSI	Extensive revisions on consultant-prepared biological resources technical studies; lengthy Section 7 mitigation negotiations with NMFS			
4	Alameda/ Santa Clara	680	Sunol Grade High-Occupancy Vehicle and Auxiliary Lanes	FONSI	Multiple iterations of traffic operational analysis required due to local agency concerns on local traffic impacts			
5	Monterey	101	Prunedale Improvement Project	FONSI	Multiple scope changes resulting from public input; lengthy Caltrans and FHWA review timeframes and extensive comments on FED			
5	San Luis Obispo	46	State Route 46 Improvements	FONSI	Lengthy NEPA/404 integration process that required project-design modifications			

**Table 5. Continued**

District	County	SHS Route	Project Name	NEPA Document Type	Points in NEPA Process Where Delays Occurred and Nature of Delays			
					PAED	ROW Certification	PS&E Complete	RTL
5	Monterey	101	Airport Boulevard Interchange	FONSI	Design of project changed and new alternative added			
6	Kern	184	Weedpatch	FONSI	Design of project changed and new alternative added; lengthy Section 7 review by USFWS			
6	Tulare	65	Terra Bella Expressway	FONSI	Delays in receiving permits to enter private properties; project design modifications required additional surveys			
6	Fresno	41	State Route 41 Excelsior Expressway	FONSI	Lengthy Section 7 review by USFWS and Section 106 review by SHPO			
8	San Bernardino	15	Commercial Vehicle Enforcement Facility	FONSI	Extensive negotiations with USFWS and U.S. Bureau of Land Management (BLM) related to endangered species mitigation			
8	Riverside	10	Palm Drive/Gene Autry Trail Interchange	FONSI	Multiple revisions of consultant-prepared administrative draft and final environmental documents required due to extensive Caltrans QC and FHWA comments			
8	San Bernardino	10	Construct New Overcrossing and Widen Cypress Road	FONSI	Lengthy endangered species surveys and midstream change in environmental consultants		None identified	
10	Merced	59	16th Street/Olive Avenue Widening	FONSI	Project temporarily put on hold; increase in project scope required additional permits to enter			
10	Merced	140	Bradley Overhead	FONSI	Change in Section 4(f) approach from use of programmatic to project-specific evaluation; change in federal air quality analysis requirements affected analysis			
12	Orange	74	State Route 74 Safety Improvement Project	FONSI	Lengthy Section 7 process; extended public review period to accommodate public concern			
<b>Local Assistance EA/FONSI</b>								
2	Shasta	–	Cypress Avenue Bridge Replacement, Redding	FONSI	Lengthy Caltrans specialist QC review of technical studies; project temporarily put on hold due to funding	None identified	None identified	None identified
3	Butte	–	Skyway Widening Project	FONSI	Lengthy FHWA review of final environmental document			
6	Kern	–	Coffee Road to Santa Fe Way Road Widening	FONSI	Project shelved midway through PA/ED; BO for project encompassed two additional projects		None identified	
7	Los Angeles	–	Gap Closure Project	FONSI	Delay in determining type of NEPA document; lengthy turnaround by city/consultant on document revisions	None identified	None identified	None identified
7	Los Angeles	–	Beverly Boulevard over Rio Hondo Channel Bridge Replacement	FONSI	Multiple revisions of consultant-prepared technical studies and environmental document required; lengthy SHPO review; draft environmental document inconsistent with Caltrans' annotated outline; Transportation Improvement Program amended to include project		None identified	

**Table 5. Continued**

District	County	SHS Route	Project Name	NEPA Document Type	Points in NEPA Process Where Delays Occurred and Nature of Delays			
					PAED	ROW Certification	PS&E Complete	RTL
8	Riverside	–	River Road Bridge Replacement	FONSI	Project down-scoped from EIS to EA; U.S. Environmental Protection Agency concerns regarding Least Environmentally Damaging Practicable Alternative (LEDPA); multiple revisions of consultant-prepared technical studies and environmental document required	Change in ownership of parcel that needed to be acquired	None identified	
8	Riverside	–	Jurupa Avenue Underpass Grade Separation at Union Pacific Railroad	FONSI	Multiple revisions of consultant-prepared draft environmental document required	None identified	None identified	None identified
<b>State Highway System DEIS/FEIS</b>								
1	Humboldt	101	Eureka-Arcata	DEIS	Modifications to project alternatives required; draft environmental document review period extended due to agency requests; compliance with new bioacoustics analysis protocol required			
1	Mendocino	101	Willits Bypass	FEIS	Incremental modifications to project design; lengthy NEPA/Section 404 integration process; complex negotiations with agencies related to overlapping and conflicting mitigation requirements			
3	Placer	65	Lincoln Bypass	FEIS	Agency disagreement over the LEDPA	None identified	None identified	None identified
4	San Francisco	101	Doyle Drive	DEIS	Stakeholder disagreement over project alternatives; impacts on a national park and national historic landmark district requiring extensive coordination with stakeholders; funding concerns			
7	Los Angeles	405	Sepulveda Pass 405	DEIS	Draft environmental document review period extended due to public requests; lengthy Section 4(f) process; extensive revisions to visual resources technical study			
8	San Bernardino	18	Big Bear Bridge Replacement	FEIS	Extensive coordination with several resource agencies regarding alternatives and project impacts	None identified	None identified	None identified
10	Merced	152	Los Banos Bypass	FEIS	Project alignment modified to avoid extensive resources; lengthy Section 7 process design changes resulted in additional fieldwork			
<b>Local Assistance DEIS/FEIS</b>								
7	Los Angeles	–	First Street over Los Angeles River Viaduct and Street Widening	FEIS	Change in federal air quality analysis requirements affected analysis; lengthy Section 106 process	ROW certifications involved legal challenge; ROW requirements changed	None identified	None identified
<b>Pilot Program Projects (Year 1)</b>								
<b>State Highway System EA/FONSI</b>								
3	Sacramento	5	Sacramento 5 Bus/Carpool Lane	EA	Delays during preparation of technical studies			
3	Nevada	49	La Barr Meadows Widening	FONSI	Project elevated from Categorical Exclusion to EA; funding issues			

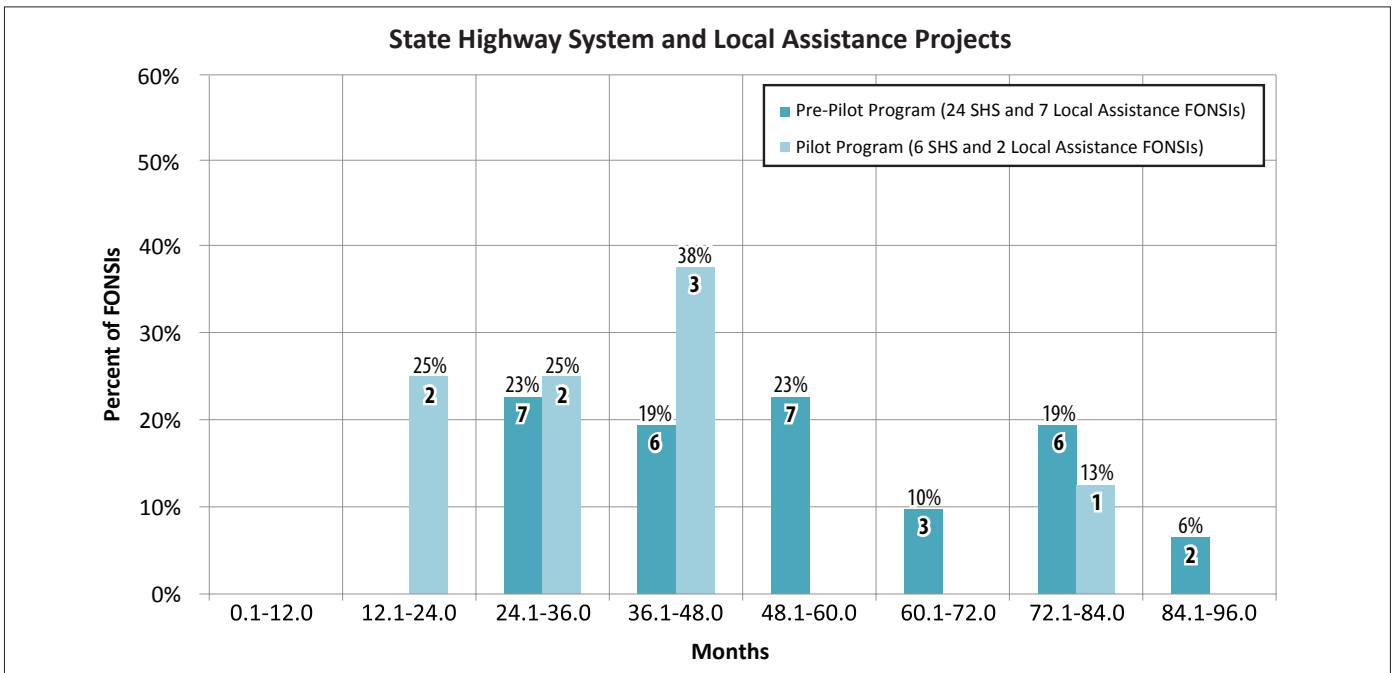
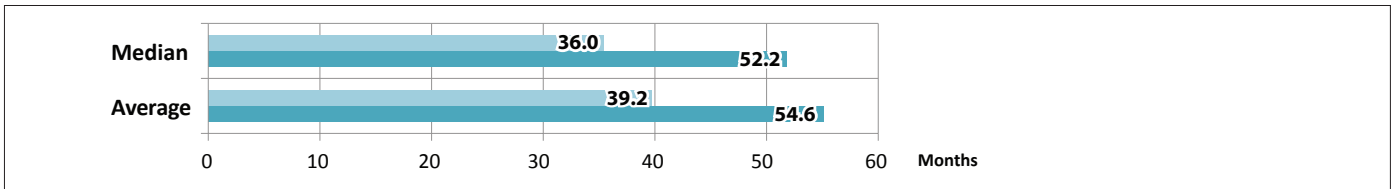
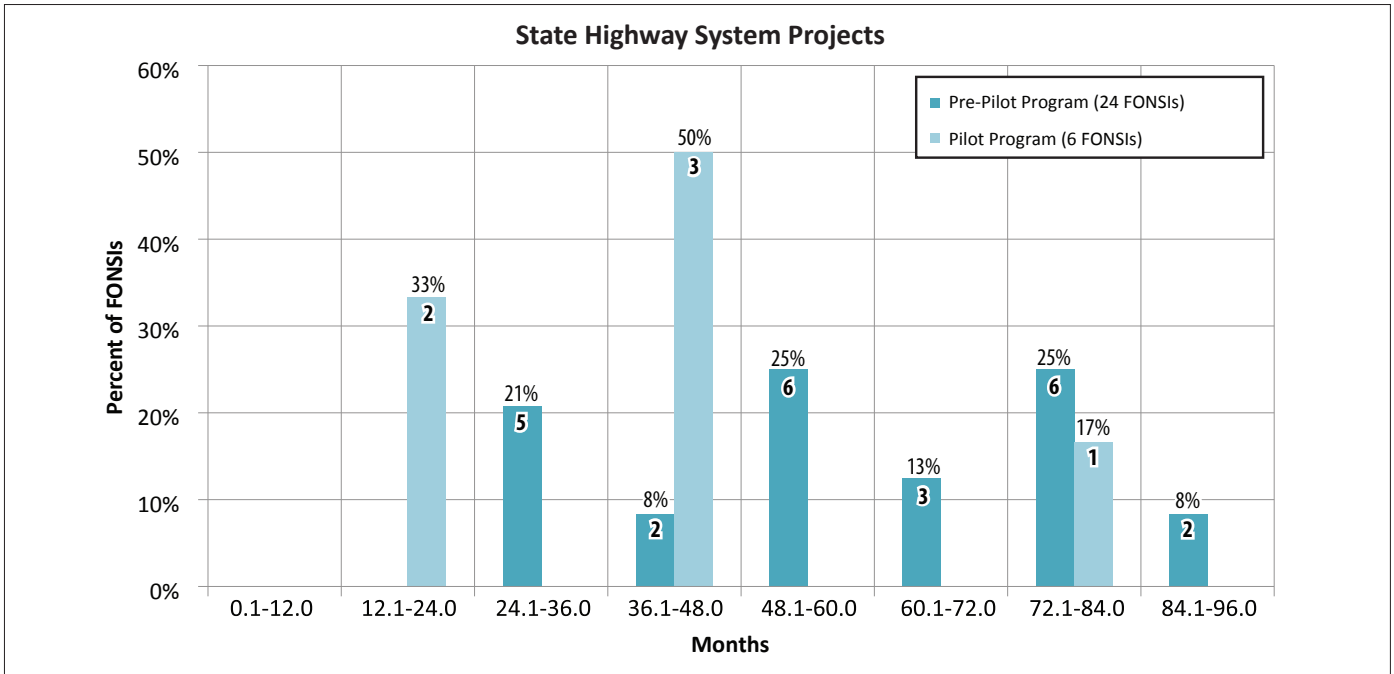
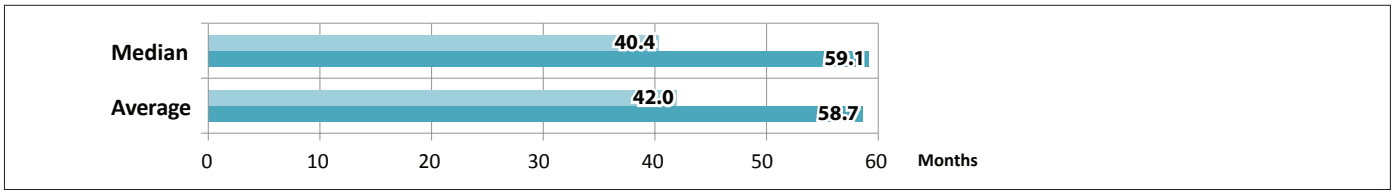
**Table 5. Continued**

District	County	SHS Route	Project Name	NEPA Document Type	Points in NEPA Process Where Delays Occurred and Nature of Delays			
					PAED	ROW Certification	PS&E Complete	RTL
3	Sacramento	80	Across Top Bus/High-Occupancy Vehicle	FONSI	Lengthy consultation with resources agencies over project impacts to State-listed wildlife species			
4	Sonoma	101	Widen for High-Occupancy Vehicle Lanes and Auxiliary Lanes	FONSI	Design issues and uncooperative consultant	Project was split into several smaller projects	Project split into several smaller projects	None identified
4	Alameda	580	Construct New Interchange	FONSI	Lengthy Section 7 process; extensive revisions to consultant-prepared environmental document required	None identified	Project split into three smaller projects which required repackaging the PS&E into three smaller contracts	
4	Napa/ Solano	12	Jameson Canyon Road Widening	FONSI	Difficulty in obtaining permission to enter private properties; modifications to project design; extensive mitigation negotiations with USFWS			
5	Santa Barbara	154	Cold Spring Canyon Bridge Suicide Barrier	EA	None identified			
5	San Benito	156	San Benito Route 156 Improvement Project	EA	Scope changes delayed completion of environmental analyses			
6	Tulare	99	Tulare to Goshen 6-Lane	EA	Delay in completion of traffic studies; modification to project design needed			
6	Kern	395	Inyo Kern 4-Lane	EA	Project initially lacked logical termini; RTP amendment required to include project			
6	Kern	14	Freeman Gulch	FONSI	None identified			
7	Los Angeles	60	Diamond Bar Interchange	EA	None identified			
7	Los Angeles	405	Wilmington Avenue Interchange	EA	Consultant-prepared draft environmental document inconsistent with Caltrans' annotated outline			
7	Ventura	118	Los Angeles Road Widening	EA	None identified			
7	Los Angeles	405	Reconstruct Burbank Boulevard Ramps and 101 Southbound	FONSI	None identified			
7	Ventura	101	Modify Del Norte Interchange	FONSI	None identified			
8	San Bernardino	58	Widen Shoulders and Median	FONSI	None identified			
8	San Bernardino	2	Safety Improvements	FONSI	Extensive discussions related to project purpose and need; design challenges			
8	San Bernardino	395	395 Widening	FONSI	Modifications to design required; lengthy Section 7 process involving BLM			
8	San Bernardino	15	Reconstruct Interchanges/Widen Mojave Bridge	FONSI	None identified			
10	Mariposa	140	Ferguson Slide Restoration	EA	Project now elevated from EA to EIS; Complex Wild and Scenic River issues			
12	Orange	5/74	Interchange Improvements	EA	None identified			
12/8	Orange/ Riverside	91	Eastbound Lane Additions	FONSI	None identified			

**Table 5. Continued**

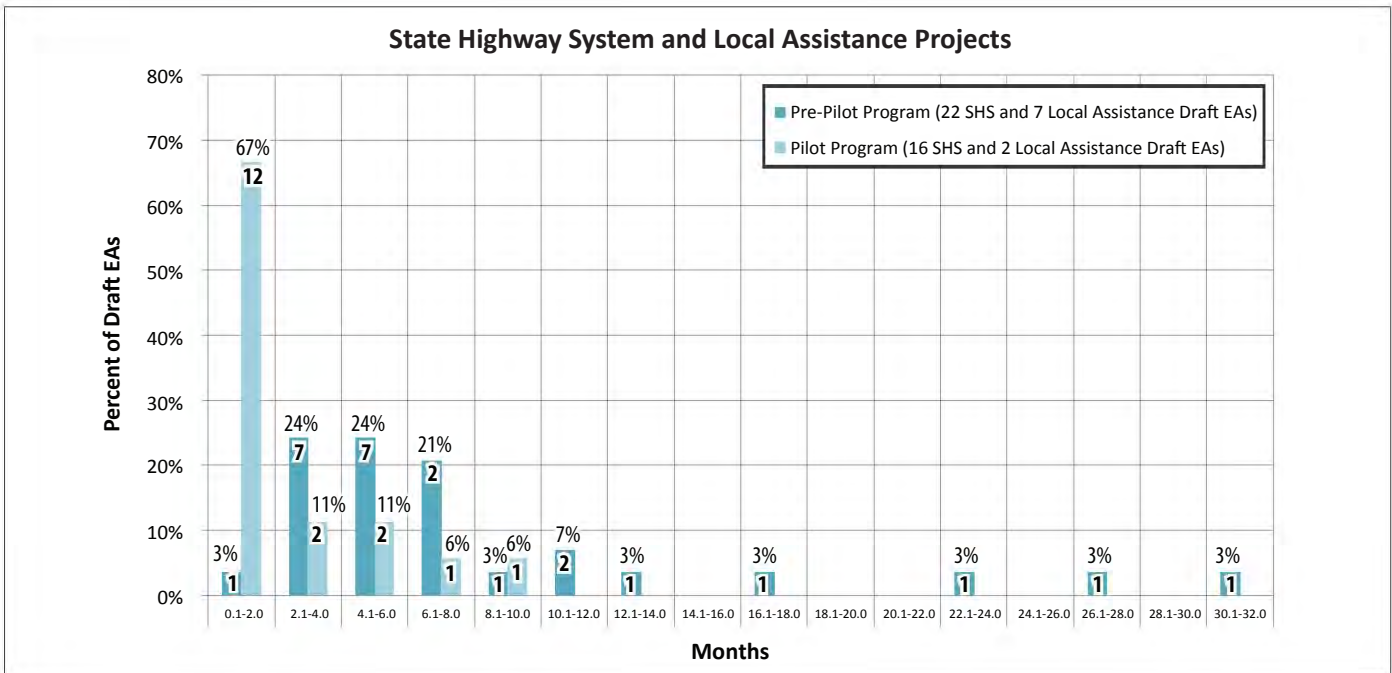
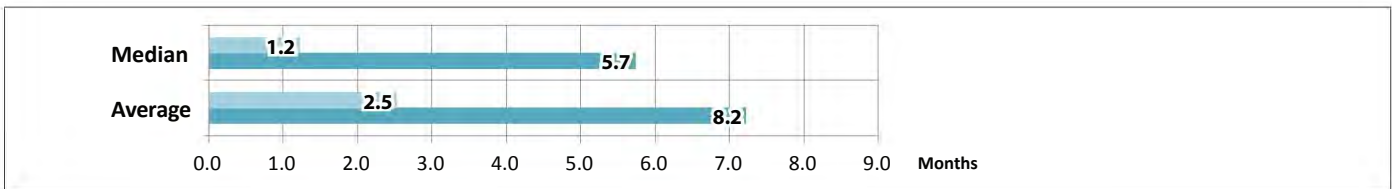
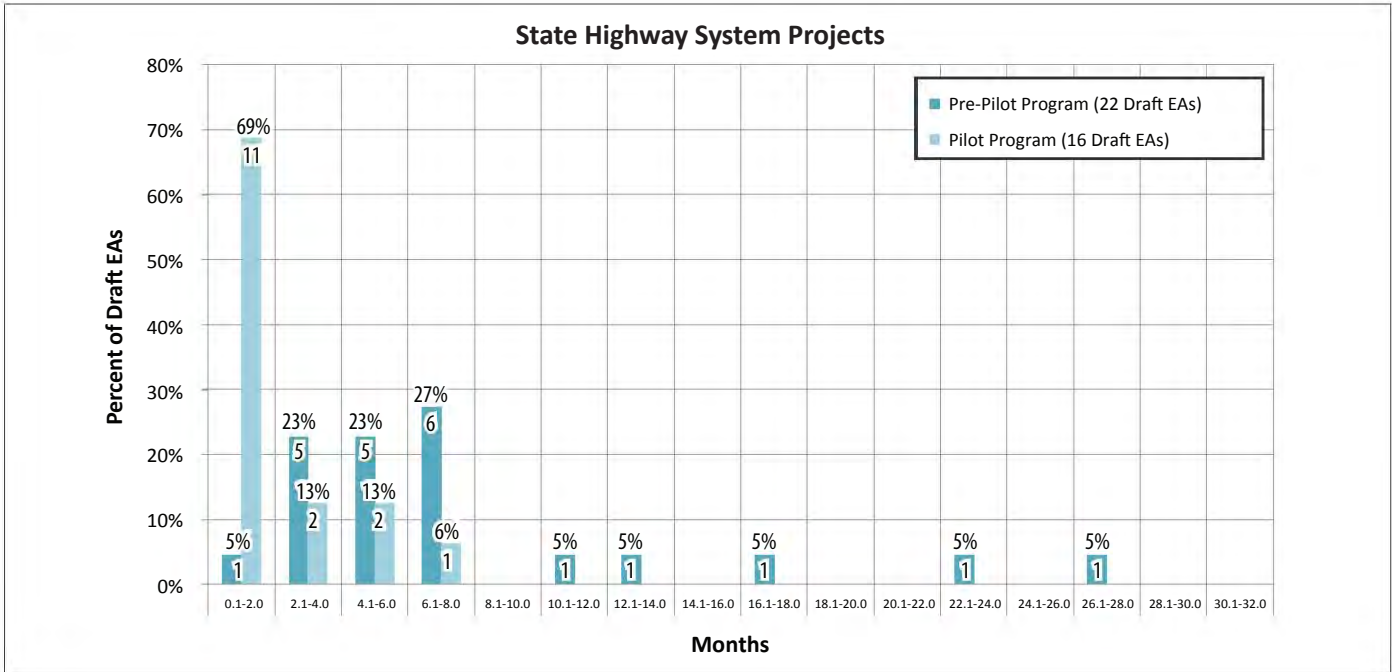
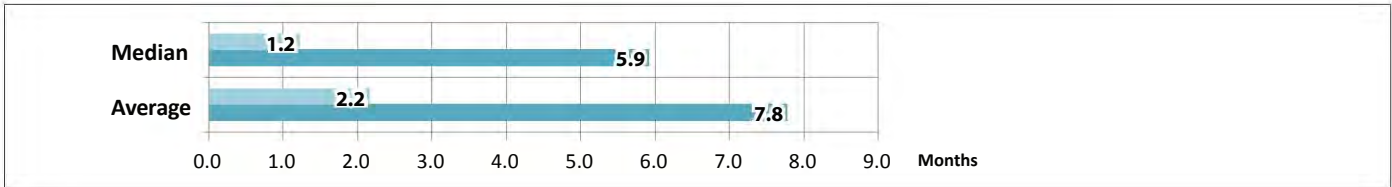
District	County	SHS Route	Project Name	NEPA Document Type	Points in NEPA Process Where Delays Occurred and Nature of Delays			
					PAED	ROW Certification	PS&E Complete	RTL
<b>Local Assistance EA/FONSI</b>								
7	Los Angeles	–	Golden Valley Road over Santa Clara River New Bridge and Approaches	FONSI	Lawsuit over project-related water issues resulted in change in project scope; extensive revisions required on consultant-prepared documents	None identified	None identified	
8	San Bernardino	–	Hesperia Ranchero Road Extension at Burlington Northern Railroad, New Grade Separation and Road Realignment	FONSI	Multiple revisions of technical studies and draft environmental document required			
<b>State Highway System DEIS/FEIS</b>								
7	Los Angeles	47	Alameda Corridor Truck Expressway	FEIS	None identified			
7	Los Angeles	405	Widen for High-Occupancy Vehicle Lanes (Sepulveda Pass 405)	FEIS	None identified			
11	San Diego	76	Highway Improvements	DEIS	None identified			
<b>Local Assistance DEIS/FEIS</b>								
4	Solano	–	Jepson, Interstate 80 Reliever Route	DEIS	Period of project inactivity resulted in extensive revisions to technical studies; Caltrans environmental project manager reassigned and consultant changed			

Note: Blank cells indicate that the project has not yet proceeded to this phase of project delivery.



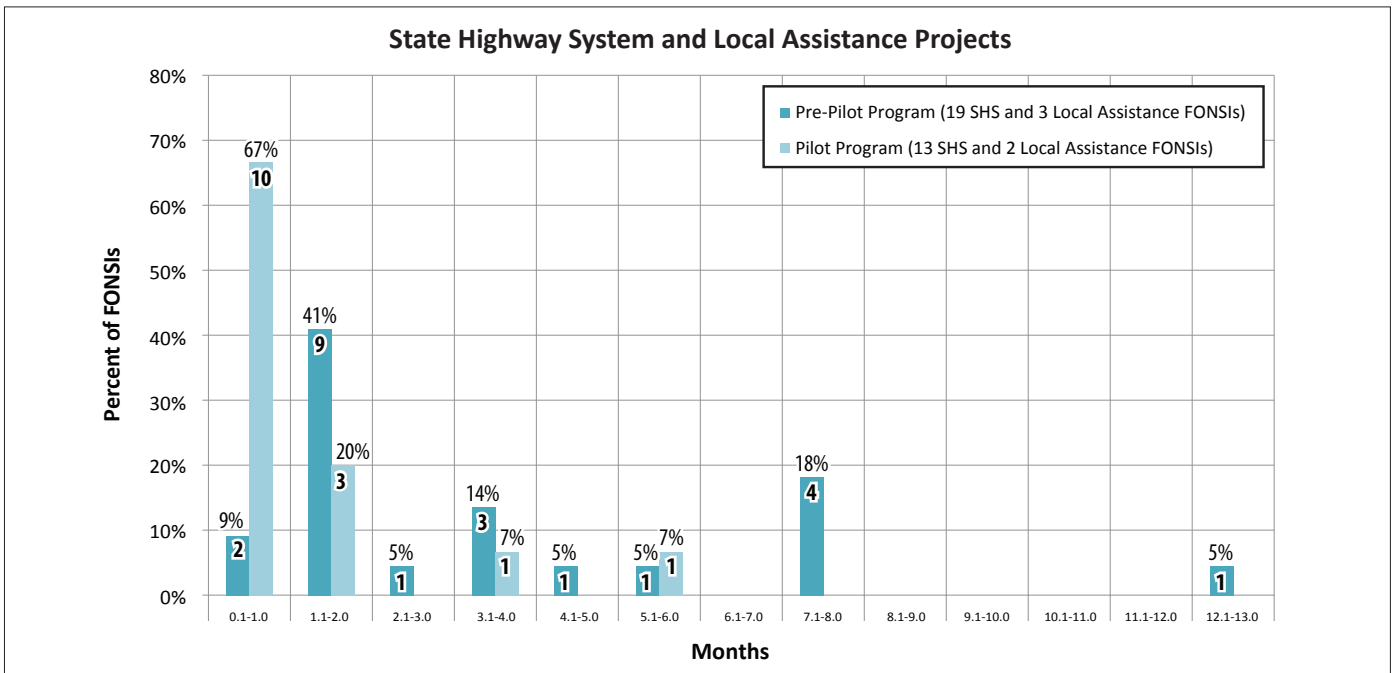
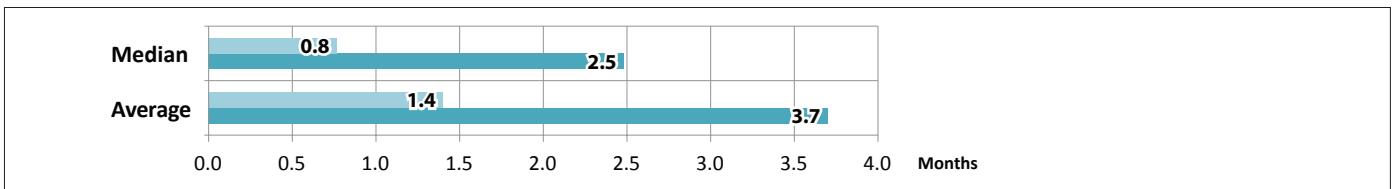
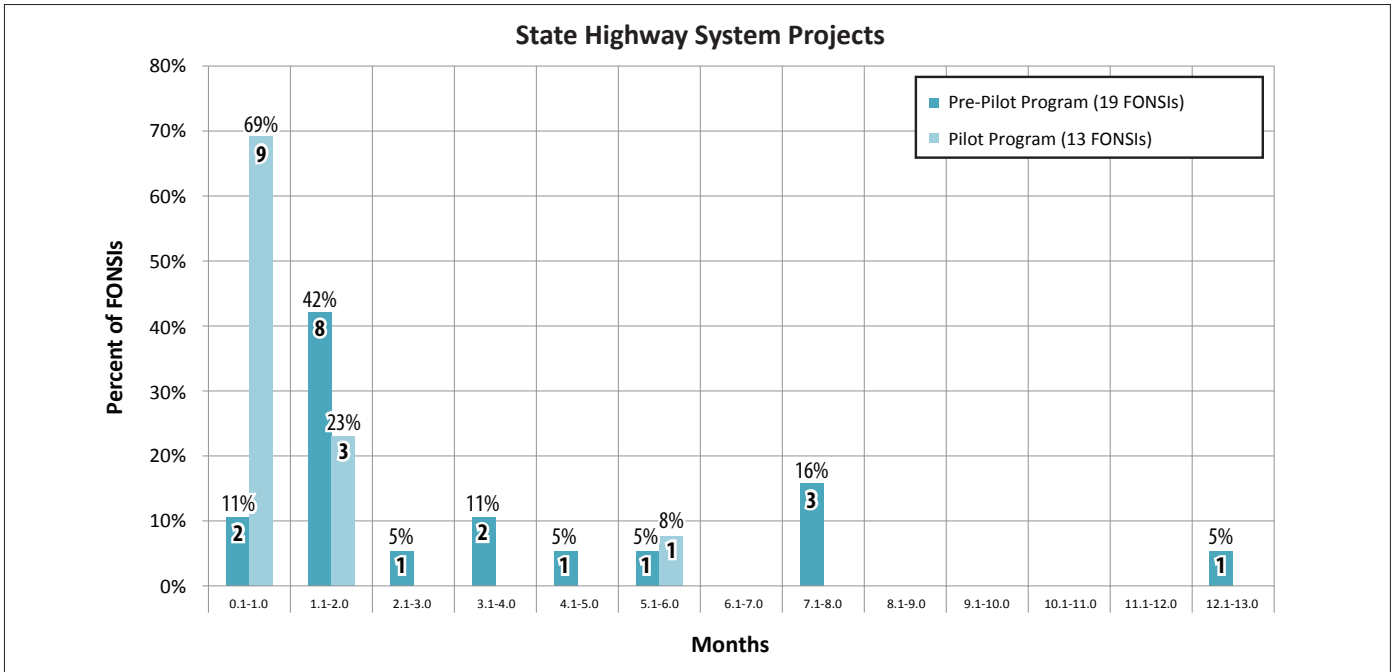
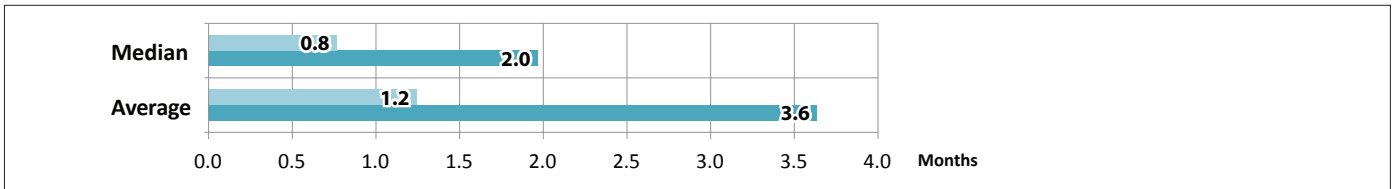
**Note:** The number of projects is shown at the top of each vertical bar.

**Figure 1**  
**Environmental Document Preparation, Analysis, and Review:**  
**Begin Environmental Studies-FONSI Approved**  
**(Comparison of Pre-Pilot Program and Pilot Program Projects)**



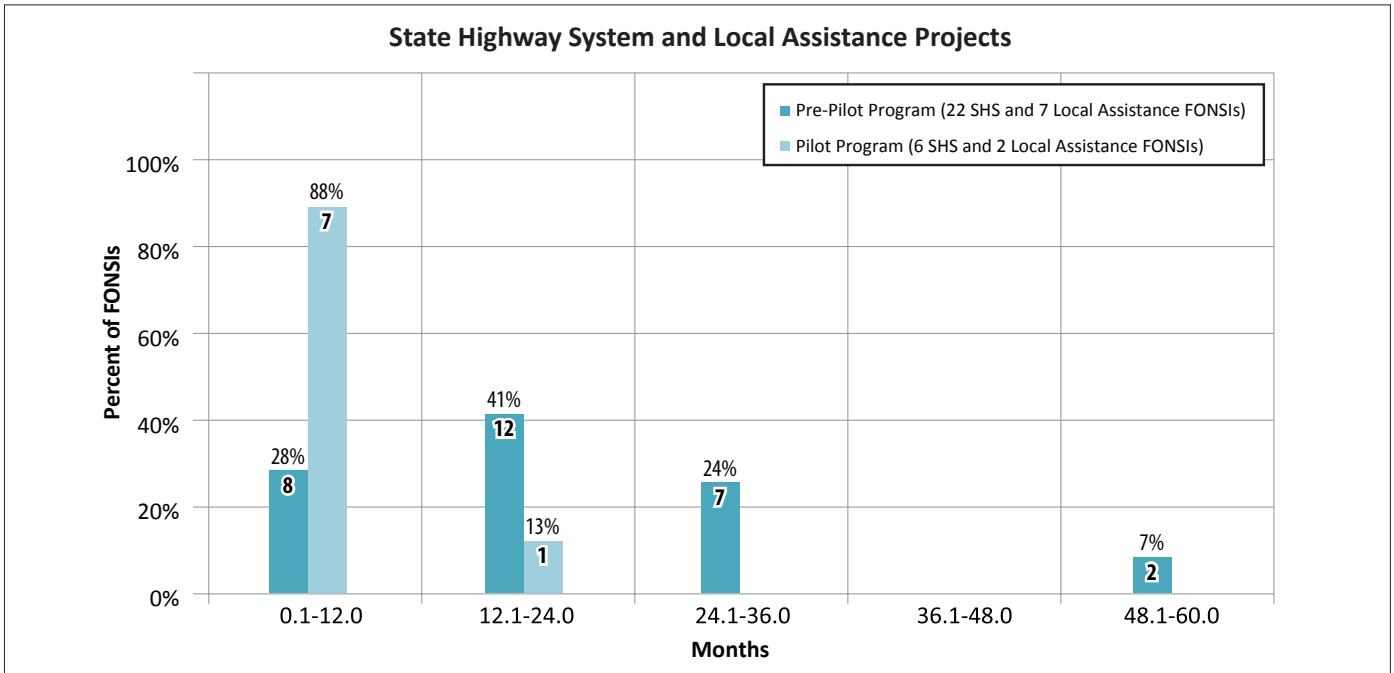
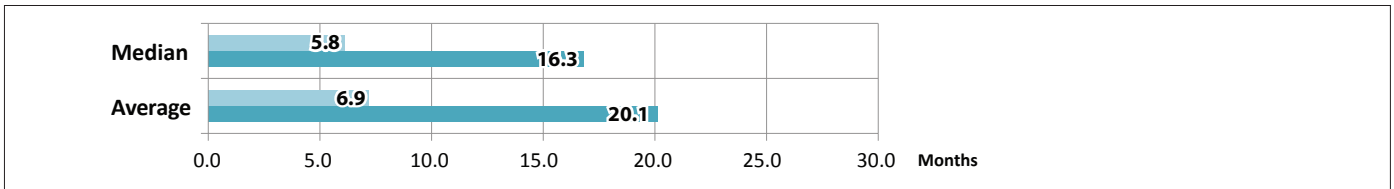
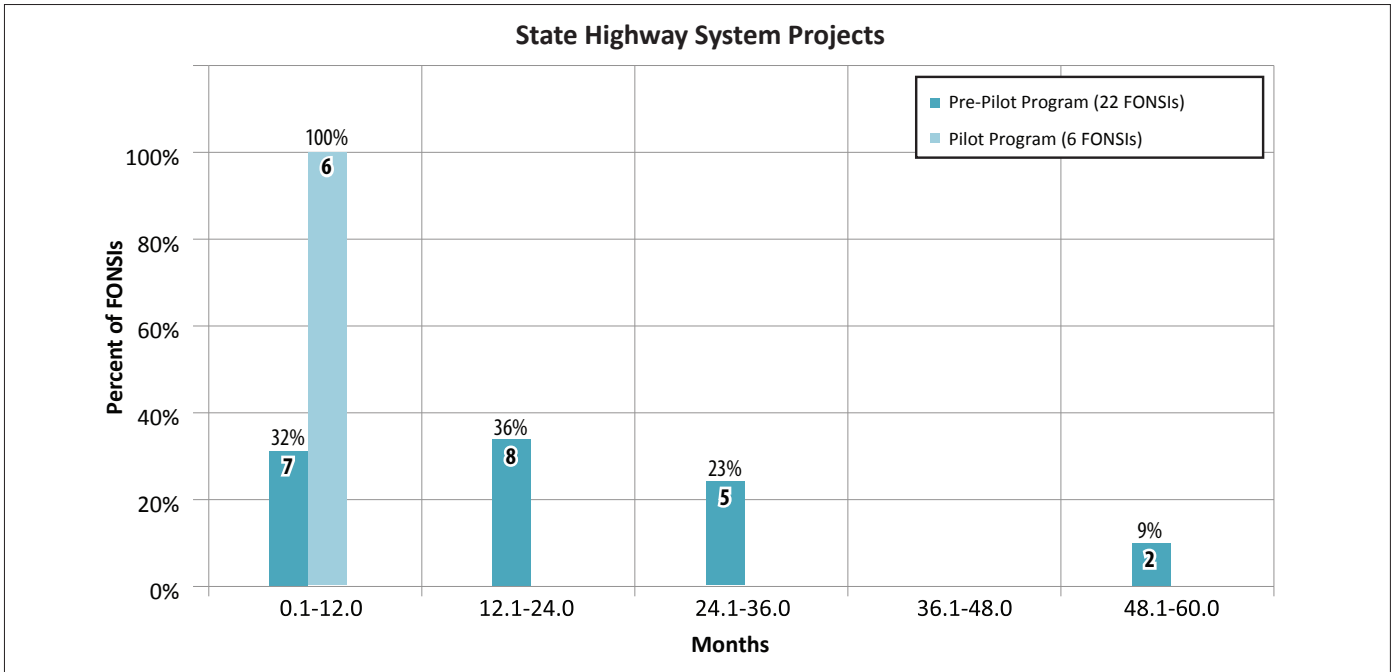
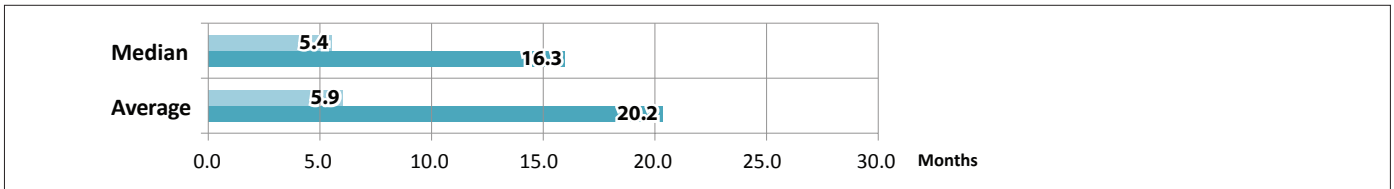
**Note:** The number of projects is shown at the top of each vertical bar.

**Figure 2**  
**Draft Environmental Document Review:**  
**Begin Quality Control Review of EA - EA Approved**  
**(Comparison of Pre-Pilot Program and Pilot Program Projects)**



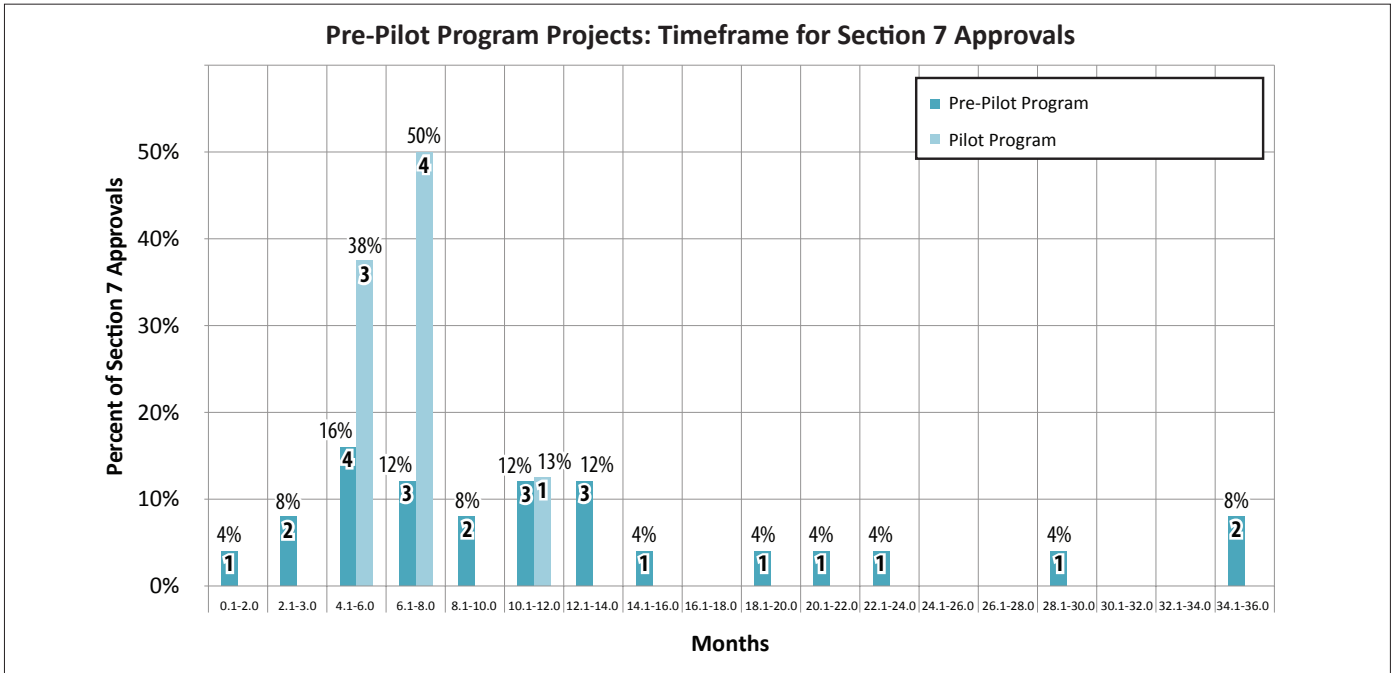
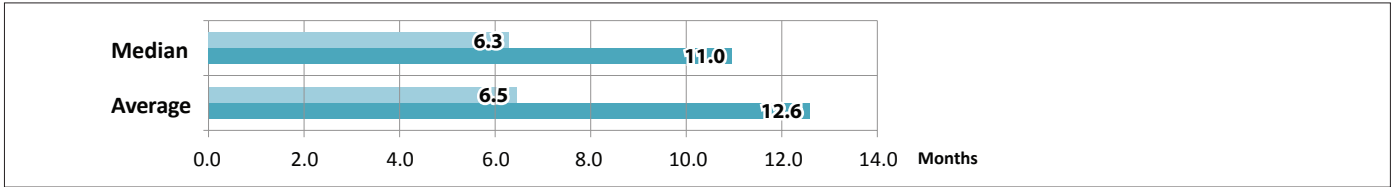
Note: The number of projects is shown at the top of each vertical bar.

**Figure 3**  
**Final Environmental Document Review:**  
**Begin Quality Control Review of FED - FONSI Approved**  
**(Comparison of Pre-Pilot Program and Pilot Program Projects)**



**Note:** The number of projects is shown at the top of each vertical bar

**Figure 4**  
**Draft and Final Environmental Document Review:**  
**Begin Quality Control Review of EA - FONSI Approved**  
**(Comparison of Pre-Pilot Program and Pilot Program Projects)**



**Note:** The number of projects is shown at the top of each vertical bar.

**Figure 5**  
**Section 7 Consultations:**  
**From Submittal of Section 7 Documentation to USFWS/NMFS to Approved Biological Opinion**  
**(Comparison of Pre-Pilot Program and Pilot Program Projects)**