



September 6, 2018

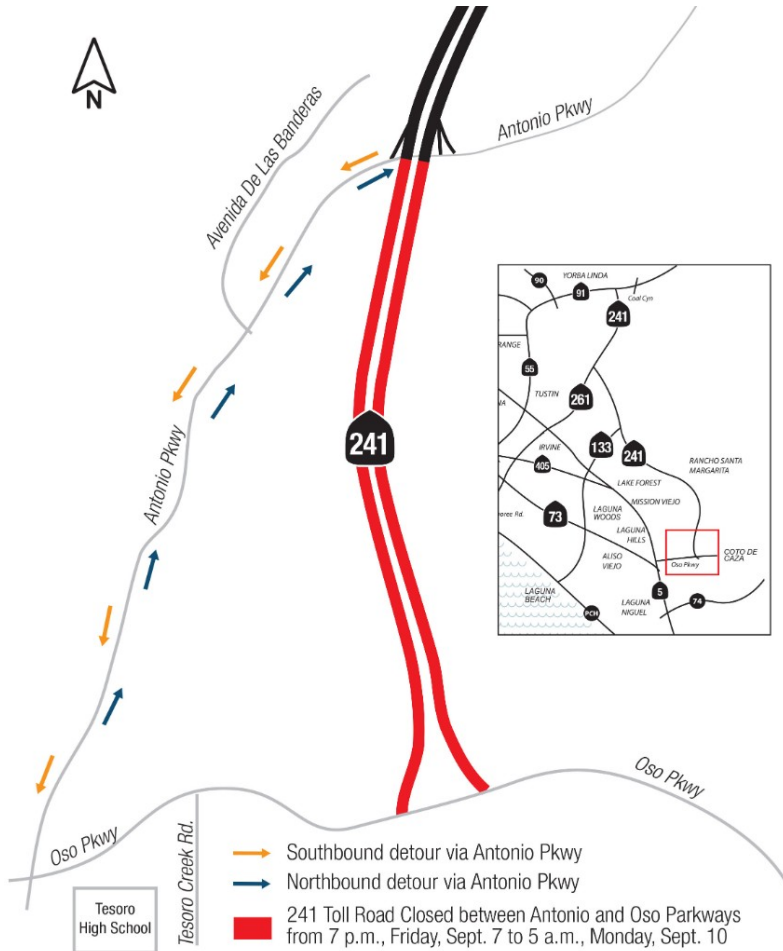
UPCOMING: 241 Toll Road Weekend Closure Between Oso Parkway and Antonio Parkway

The 241 Toll Road will be closed in both directions this weekend from Oso Parkway to Antonio Parkway while crews reconfigure toll equipment at the Oso Parkway on- and off-ramps.

WHEN: 7 p.m., Friday, Sept. 7 to 5 a.m., Monday, Sept. 10

DETOUR: Motorists will be able to enter and exit the 241 Toll Road at Antonio Parkway. To access Oso Parkway from the southbound 241 Toll Road, motorists should exit at Antonio Parkway and proceed south to Oso Parkway.

We apologize for any inconvenience and appreciate your patience while crews perform this work over the weekend.



Due to the dynamic nature of construction, please note dates and times are subject to change due to unforeseen operational factors or inclement weather.

SIGN UP FOR UPDATES


Visit www.OCPublicWorks.com/OsoBridge to sign up to receive construction updates via email. Orange County Public Works is committed to keeping the public well-informed during construction, especially those who frequently travel through the project area. Any questions, please call 833-OSO-PKWY (676-7599).

PROJECT HIGHLIGHTS

- Provides a direct connection between State Route 241 and Los Patrones Parkway.
- Improves traffic flow, enhances safety, and supports regional mobility.
- Constructs a sidewalk on the south side of Oso Parkway to improve pedestrian access.



 www.OCPublicWorks.com/OsoBridge

 833-OSO-PKWY

 OsoBridge@ocpw.ocgov.com

  OCPublicWorks