

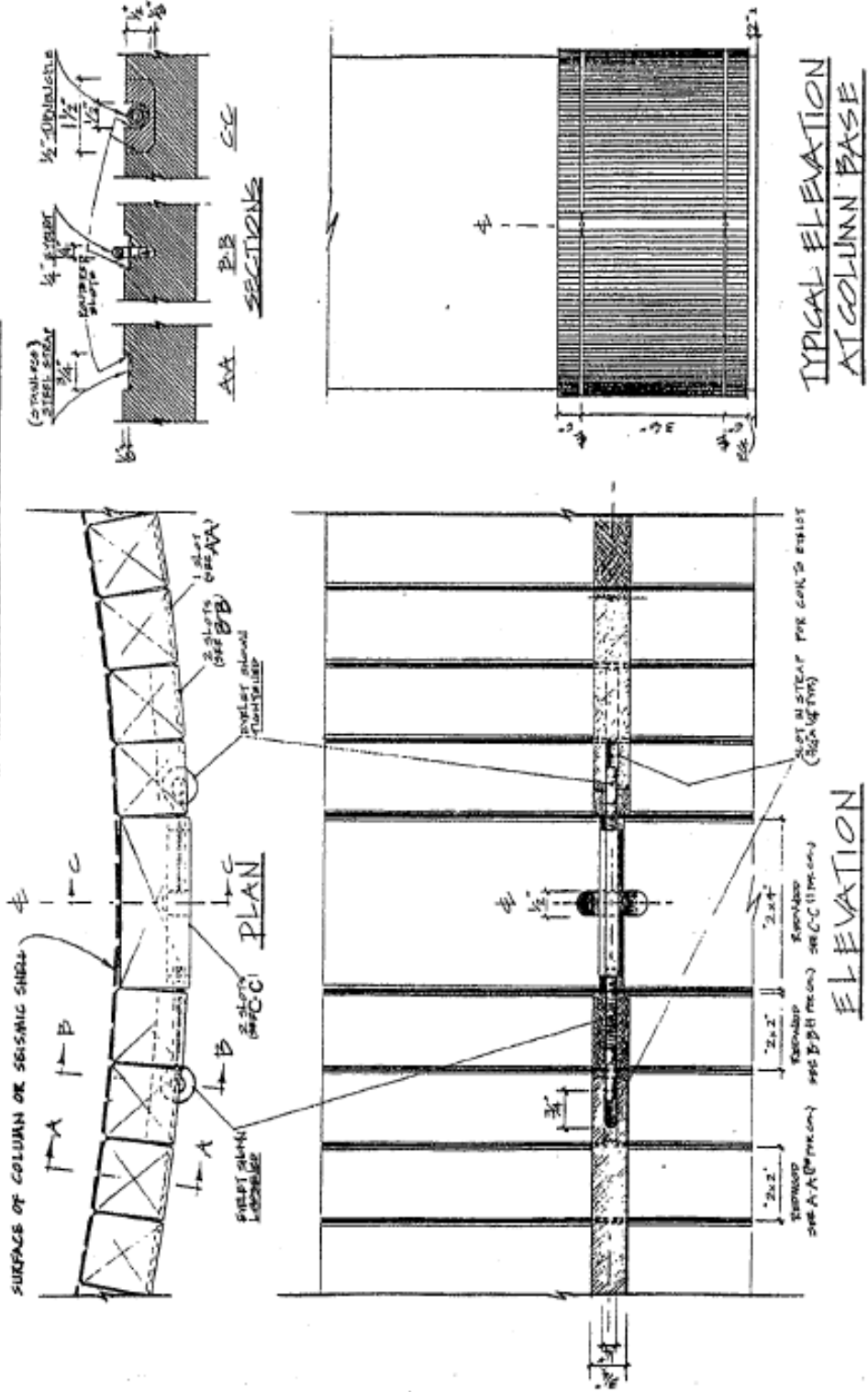
COLUMN PROTECTION SYSTEMS

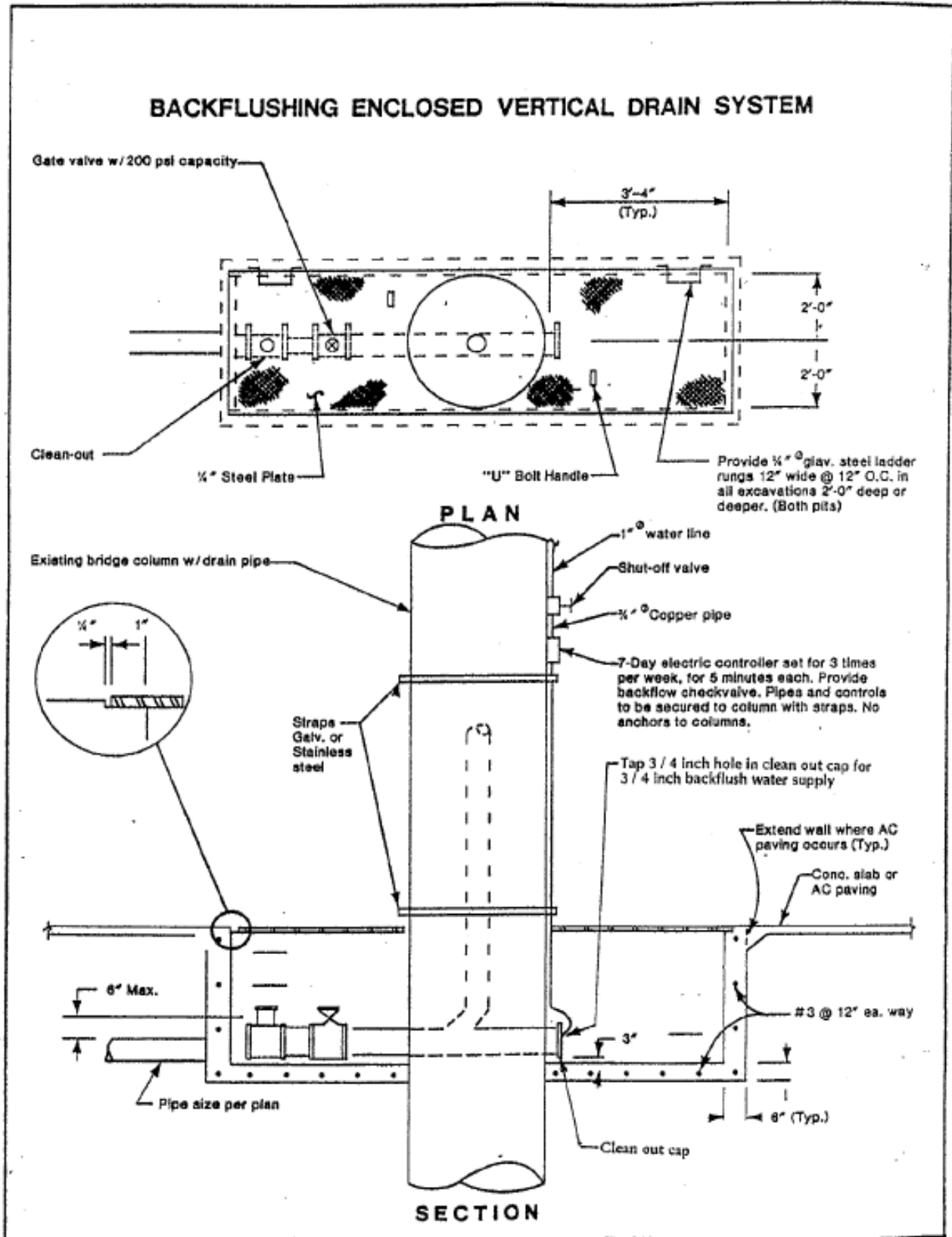
Airspace Leases require a column protection system in areas where columns are exposed to vehicular traffic. Protection systems using material capable of shrinking with age, such as wood, must have the ability to adjust for shrinkage. Systems using adhesive bonding will not be permitted. Areas exposed to pedestrian traffic will have the additional requirement of presenting smooth surfaces to the passersby.*

The following illustrations are examples of different types of column protection that can be used. They are not intended to be all encompassing, nor are they mandatory. If the samples provided are not suitable for a particular project, the applicant may submit an independent design of column protection for review. However, the system used shall provide an equivalent amount of protection to the structure columns and public as the examples shown.

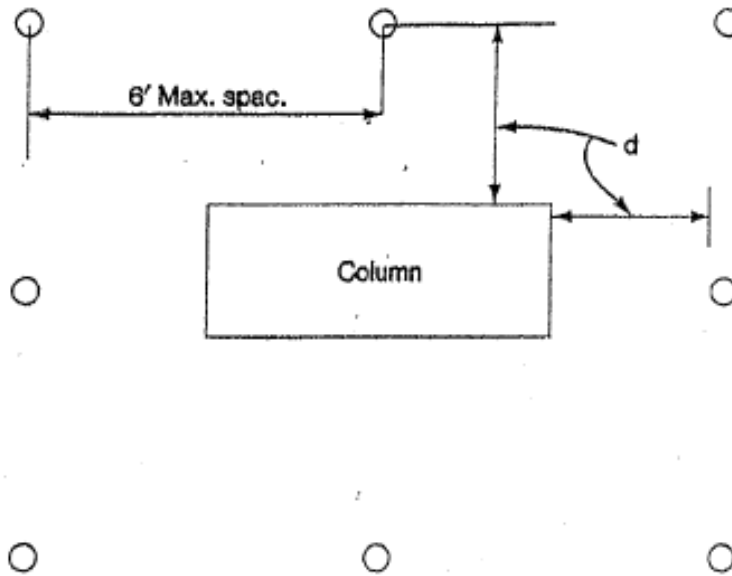
* A column protection system as shown in the example utilizing straps and turnbuckle satisfies the smoothness requirement for pedestrians.

COLUMN PROTECTION (STRAP & TURNBUCKLE)

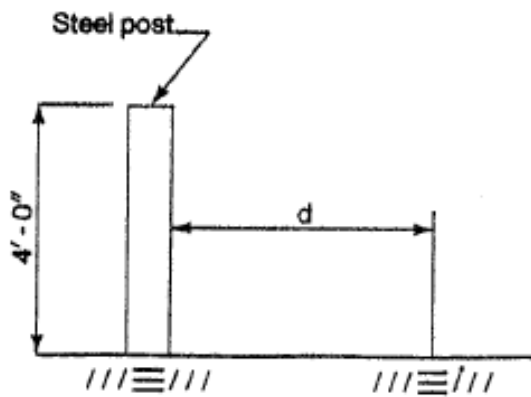




COLUMN PROTECTION IN PARKING LOTS



LAYOUT



$d = 3$ feet for autos and pickups
 $d = 4$ feet for buses and trucks
Require 4 inch diameter standard steel pipe post set in and filled with concrete.
Depth of post hole will vary dependent on soil conditions. Hole depth must be deep enough for post to bend on impact before overturning.

