

DRISI

CALTRANS DIVISION OF RESEARCH,
INNOVATION AND SYSTEM INFORMATION

TRANSFORMING IDEAS INTO SOLUTIONS

Research

Notes

Transportation
Safety and
Mobility

NOVEMBER 2023

Project Title:
Evaluation of Vehicle Detection
Systems Compared to Inductive
Loops and Video Ground Truth
Using the C1 Reader

Task Number: 4015

Start Date: October 1, 2021

Completion Date: March 31, 2024

Task Manager:
John Slonaker
Sr. Transportation Electrical Engineer
(Specialist)
john.slonaker@dot.ca.gov

TIRTL Evaluation

Comparing the accuracy of The Infra-Red Traffic Logger vehicle detector to inductive loop detectors for count station applications

WHAT IS THE NEED?

District 4 of the California Department of Transportation (Caltrans) has installed two TIRTL (The Infra-Red Traffic Logger, by CEOS Pty Ltd) vehicle detectors at count stations on southbound state route 680. These count stations already had functional inductive loop detectors, and the TIRTL devices were installed with their detection zones overlapping the loops. District 4 requested that Caltrans' Division of Research, Innovation and System information (DRISI) test this pilot installation against the loops to determine whether TIRTL detectors could be used effectively instead of loops for future count station installations.

WHAT ARE WE DOING?

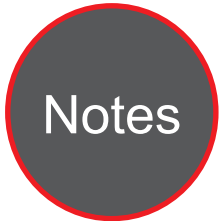
DRISI temporarily installed "C1 Reader" devices, developed by DRISI to sample digital output signals from vehicle detectors, between the input files and the controllers in the equipment cabinets at the District 4 count stations. The C1 Readers recorded timestamps for each passing vehicle from the outputs of both the TIRTL detectors and the inductive loop detectors. Video from Caltrans' on-site CCTV surveillance cameras was recorded concurrently with a DVR. A few hours of preliminary C1 data and video were recorded at North Main Street location.

DRISI plans to analyze the C1 data and video using the DRISI-developed VideoSync software. As the name implies, the software allows the user to synchronize recorded video with recorded timestamps output by detectors under test. Occasionally, this process exposes "false positives," where a detector reported a vehicle that wasn't present in the video, and "false negatives," where a detector fails to report a vehicle that was present in the video. The degree of accuracy of a vehicle detector is defined as its "Sensitivity," where:

$$\text{Sensitivity} = \frac{\text{True Positive}}{\text{False Positive} + \text{False Negative} + \text{True Positive}} \times 100.0$$



DRISI provides solutions and knowledge that improves California's transportation system



According to this definition, the detector is penalized equally and cumulatively for each false positive and false negative. The more of either, the lower the sensitivity. If there are none of either, the sensitivity equals 100%.

WHAT IS OUR GOAL?

The anticipated outcome of this research is a report that quantifies the accuracy, in terms of sensitivity, of the TIRTL vehicle detectors as compared to the accuracy of the inductive loops.

WHAT IS THE BENEFIT?

This study can give Caltrans districts a quantified account of the typical accuracy of TIRTL vehicle detection systems relative to inductive loops so they can make informed, data-driven decisions when specifying detection systems for vehicle count station designs. Ultimately, it will be up to the district traffic engineers to decide whether the benefit of the ease of installation of the TIRTL detection system, relative to inductive loop detectors, is worth any discrepancy in accuracy that this testing may reveal. On the other hand, if this study were to show the TIRTL system to be equally or more accurate than loops, it would provide strong justification for districts to specify this system, with its more efficient installation process, in their designs.

WHAT IS THE PROGRESS TO DATE?

DRISI has analyzed about 30 minutes of TIRTL and inductive loop detection data, along with the corresponding video, for the North Main Street count station location. Preliminary results indicate that the TIRTL has a Sensitivity of about 98%, which is higher than typical results for out-of-pavement detectors based on radar or machine vision technology. However, this data was collected during free-flowing traffic conditions, and Sensitivity values may be different for congested conditions.

DRISI has also analyzed about an hour of TIRTL and inductive loop detection data, along with

the corresponding video, for the South Main Street count station location. However, the results are inconclusive due to some irregularities in the data. DRISI is currently analyzing an hour-long data set collected during heavy congestion from the South Main Street count station location. Once this data set is analyzed, DRISI should have results that are more representative of all traffic conditions on southbound state route 680.

Once DRISI has analyzed traffic detection data collected in free-flowing and congested traffic conditions, it will determine Sensitivity values for both detection systems and document the results in a report that compares the detection accuracy of the TIRTL detectors to the inductive loops.

IMAGES

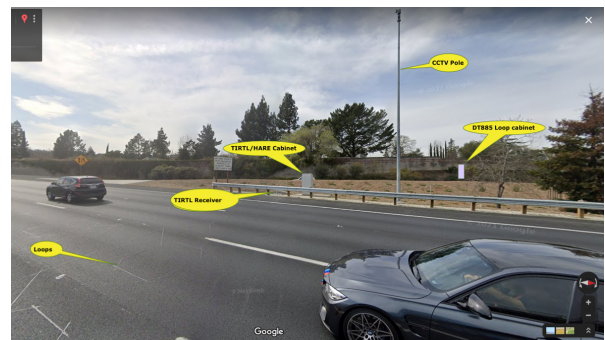


Image 1: North Main Street count station location

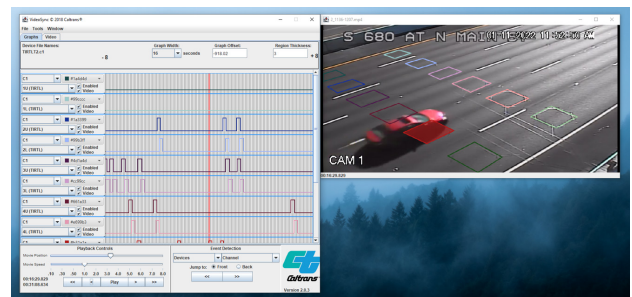


Image 2: Analyzing preliminary data and video from the North Main Street location in VideoSync

The contents of this document reflect the views of the authors, who are responsible for the facts and accuracy of the data presented herein. The contents do not necessarily reflect the official views or policies of the California Department of Transportation, the State of California, or the Federal Highway Administration. This document does not constitute a standard, specification, or regulation. No part of this publication should be construed as an endorsement for a commercial product, manufacturer, contractor, or consultant. Any trade names or photos of commercial products appearing in this document are for clarity only.

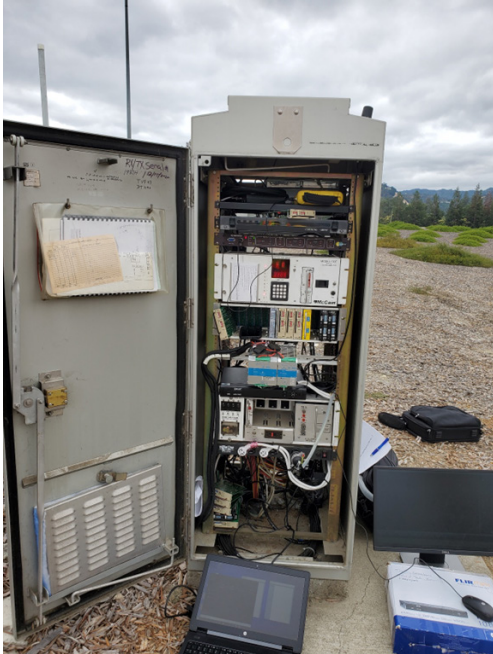
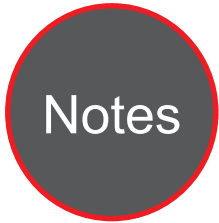


Image 3: Setting up the data collection at the South Main Street count station cabinet

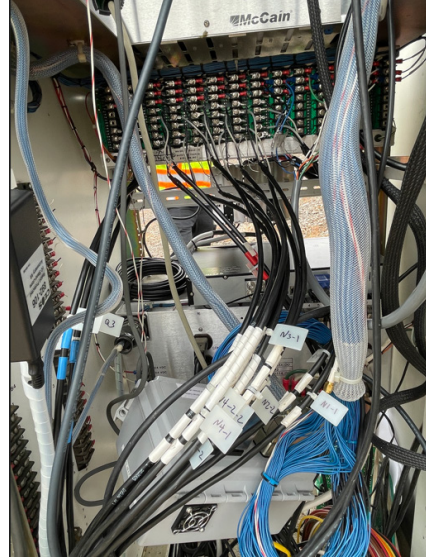


Image 5: The C1 Reader (grey box in lower foreground) installed in the South Main Street count station cabinet



Image 4: TIRTL transmitter and adjacent CCTV camera pole at the South Main Street count station location

The contents of this document reflect the views of the authors, who are responsible for the facts and accuracy of the data presented herein. The contents do not necessarily reflect the official views or policies of the California Department of Transportation, the State of California, or the Federal Highway Administration. This document does not constitute a standard, specification, or regulation. No part of this publication should be construed as an endorsement for a commercial product, manufacturer, contractor, or consultant. Any trade names or photos of commercial products appearing in this document are for clarity only.