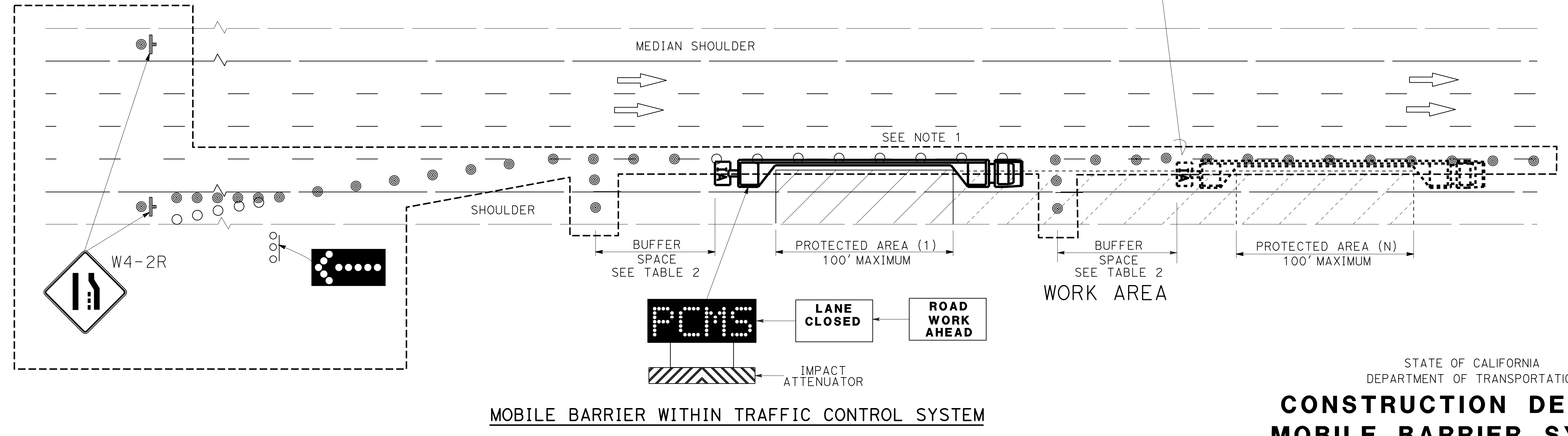
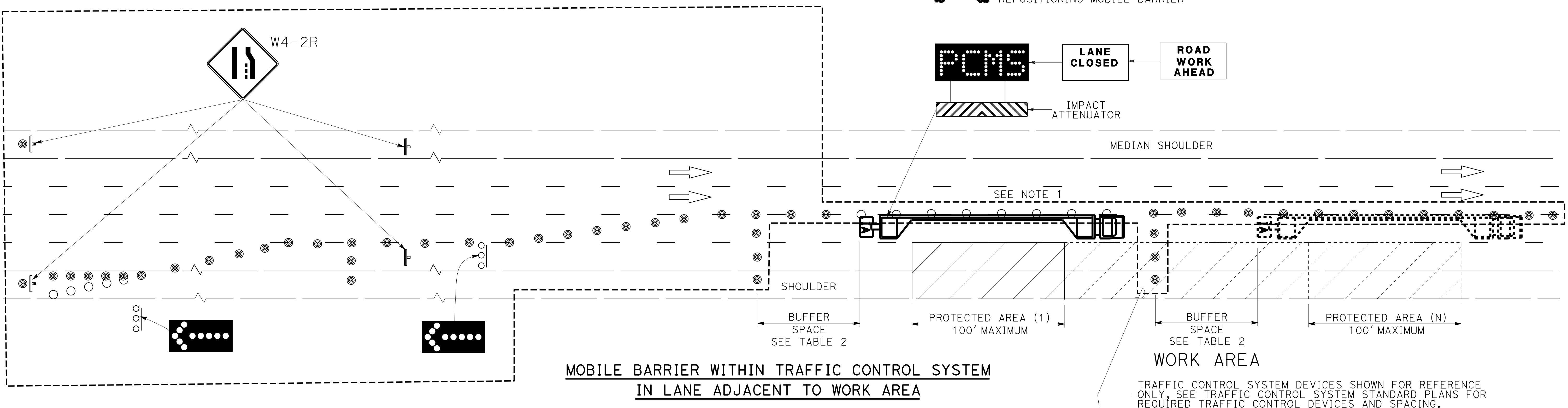


Dist	COUNTY	ROUTE	POST MILES TOTAL PROJECT	SHEET No.	TOTAL SHEETS
<i>Charles D. Suszko</i> REGISTERED CIVIL ENGINEER			2-26-21	DATE	
Charles D. Suszko No. C43029 Exp. 3-31-22 CIVIL					
PLANS APPROVAL DATE					
<small>THE STATE OF CALIFORNIA OR ITS OFFICERS OR AGENTS SHALL NOT BE RESPONSIBLE FOR THE ACCURACY OR COMPLETENESS OF SCANNED COPIES OF THIS PLAN SHEET.</small>					

**NOTE:**

- Channelizing devices shown adjacent to the mobile barrier may be removed or not placed while the mobile barrier is stationary, but must be placed or replaced as the barrier moves within the work area.
- See Standard Plan T9 for tables.

- LEGEND:**
- TRAFFIC CONE
  - TRAFFIC CONE (OPTIONAL)
  - ⊥ TEMPORARY TRAFFIC CONTROL SIGN
  - ⬇ TYPE II FLASHING ARROW SIGN
  - FAS SUPPORT OR TRAILER
  - FCMS PORTABLE CHANGEABLE MESSAGE SIGN
  - ⋯ REPOSITIONING MOBILE BARRIER



STATE OF CALIFORNIA  
 DEPARTMENT OF TRANSPORTATION  
**CONSTRUCTION DETAILS**  
**MOBILE BARRIER SYSTEM**  
 NO SCALE

**T24**

STATE OF CALIFORNIA - DEPARTMENT OF TRANSPORTATION  
 Caltrans®  
 FUNCTIONAL SUPERVISOR  
 CALCULATED/DESIGNED BY  
 CHECKED BY  
 REVISED BY  
 DATE REVISED

