




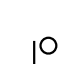



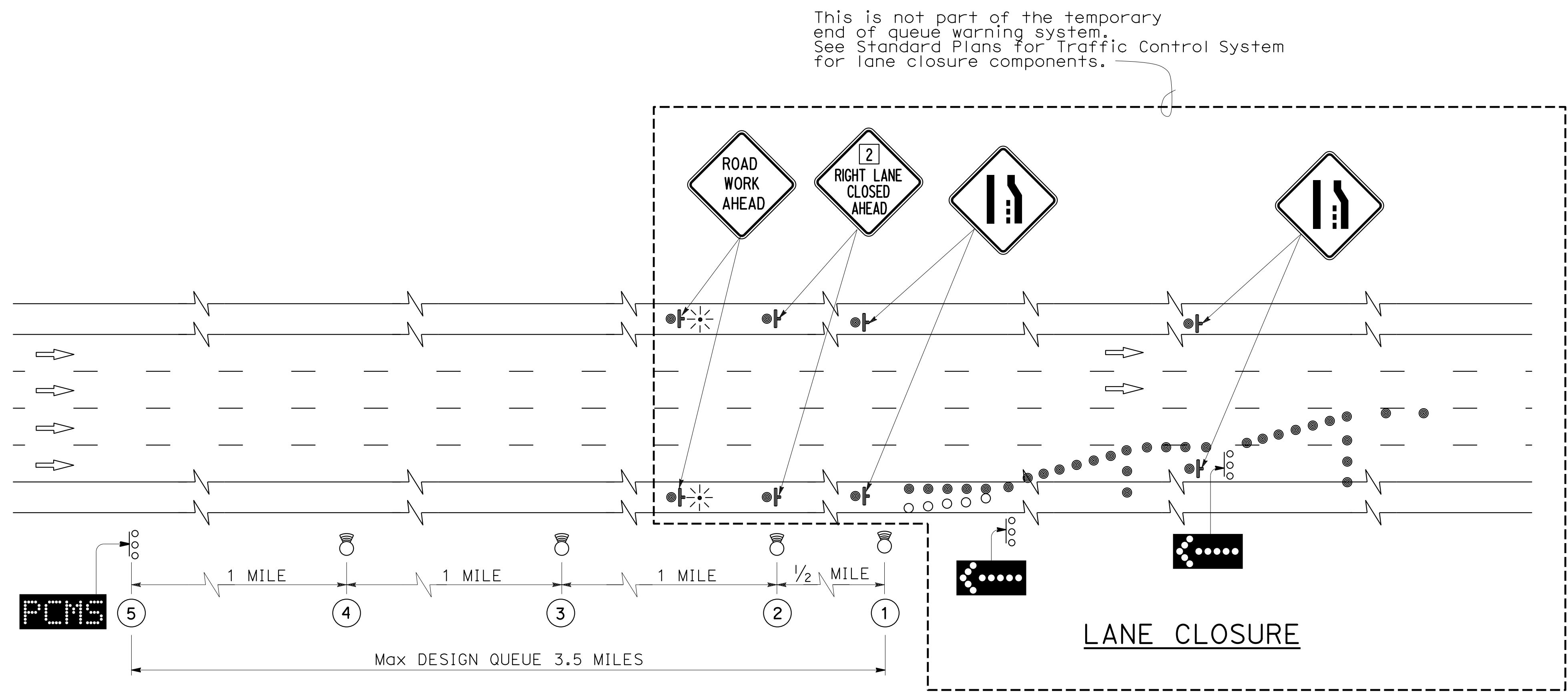


LEGEND:

-  PORTABLE VEHICLE SPEED SENSOR
-  TRAFFIC CONE
-  TRAFFIC CONE (OPTIONAL TAPER)
-  PORTABLE FLASHING BEACON
-  SIGN
-  SUPPORT OR TRAILER
-  LOCATION
-  FLASHING ARROW SIGN
-  PORTABLE CHANGEABLE MESSAGE SIGN (PCMS)



OPERATIONAL GUIDELINE FOR PCMS MESSAGES				
MESSAGE AT ⑤	LAST 5 Min SPEED AVERAGES, V(MPH)			
	SENSOR AT ④	SENSOR AT ③	SENSOR AT ②	SENSOR AT ①
ROAD WORK AHEAD	> 45	> 45	> 45	=> 45
SLOW TRAFFIC 3 MILES	> 45	> 45	=> 45	25 < V < 45
SLOW TRAFFIC 2 MILES	> 45	=> 45	25 < V < 45	---
SLOW TRAFFIC 1 MILE	=> 45	25 < V < 45	---	---
SLOW TRAFFIC AHEAD	25 < V < 45	---	---	---
STOPPED TRAFFIC 3 MILES	> 25	> 25	> 25	<= 25
STOPPED TRAFFIC 2 MILES	> 25	> 25	<= 25	---
STOPPED TRAFFIC 1 MILE	> 25	<= 25	---	---
STOPPED TRAFFIC AHEAD	<= 25	---	---	---

Speed shown on table are for posted speed limit of 55 mph.
 For other posted speed limits adjust speeds shown on the table by adding or subtracting the calculated speed adjustment using the following formula:

$$\text{Speed Adjustment} = X \text{ posted speed limit} - 55 \text{ mph}$$
 Add speed adjustments to speed averages.

STATE OF CALIFORNIA
 DEPARTMENT OF TRANSPORTATION
CONSTRUCTION DETAILS
TEMPORARY END OF QUEUE
WARNING SYSTEM
TYPE 2
(QUEUE <= 3.5 MILES)
 NO SCALE

C-X2

STATE OF CALIFORNIA - DEPARTMENT OF TRANSPORTATION
 Et Caltrans®
 FUNCTIONAL SUPERVISOR
 CALCULATED/DESIGNED BY
 CHECKED BY
 REVISED BY
 DATE
 REVISIONS: 00-00-00
 LAST REVISION DATE PLOTTED => 30-OCT-2019
 TIME PLOTTED => 15:56