







# GUALALA TOWN PLAN ALTERNATIVE





Note:  
 1. PLACE RUMBLE STRIPS 500 FEET SOUTH OF CENTER STREET  
 IN NORTHBOUND DIRECTION (FOR TRAFFIC APPROACHING GUALALA DOWNTOWN).  
 2. PLACE "YOUR SPEED" RADAR FEEDBACK SIGN SOUTH OF CENTER STREET.



 DECOMPOSED GRANITE PATH	 BIKE LANE	 FUTURE TRAIL	GUALALA TOWNPLAN ALTERNATIVE PLAN VIEW DISPLAY G-1
 PAVEMENT	 POTENTIAL FUTURE CHARGING STATION	 EXIST RIGHT OF WAY (R/W)	
 LANDSCAPE	 STRIPING		PRELIMINARY DESIGN FOR STUDY PURPOSES ONLY
 SIDEWALK			

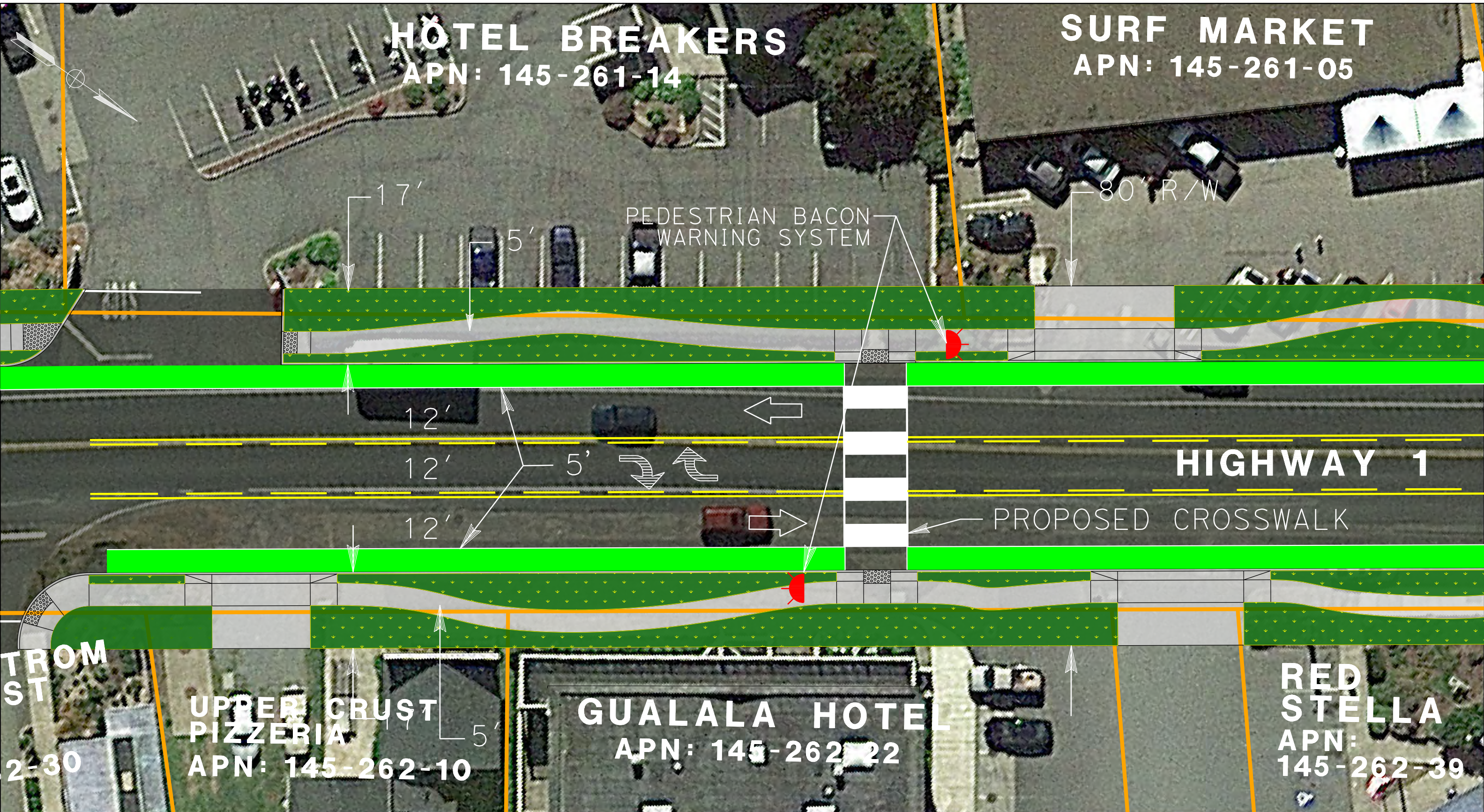
SCALE 1:20FT

20 0 20 40



**HOTEL BREAKERS**  
APN: 145-261-14

**SURF MARKET**  
APN: 145-261-05



DECOMPOSED GRANITE PATH

BIKE LANE

FUTURE TRAIL

GUALALA TOWNPLAN ALTERNATIVE  
PLAN VIEW DISPLAY G-2

PAVEMENT

POTENTIAL FUTURE CHARGING STATION

LANDSCAPE

EXIST RIGHT OF WAY (R/W)

SIDEWALK

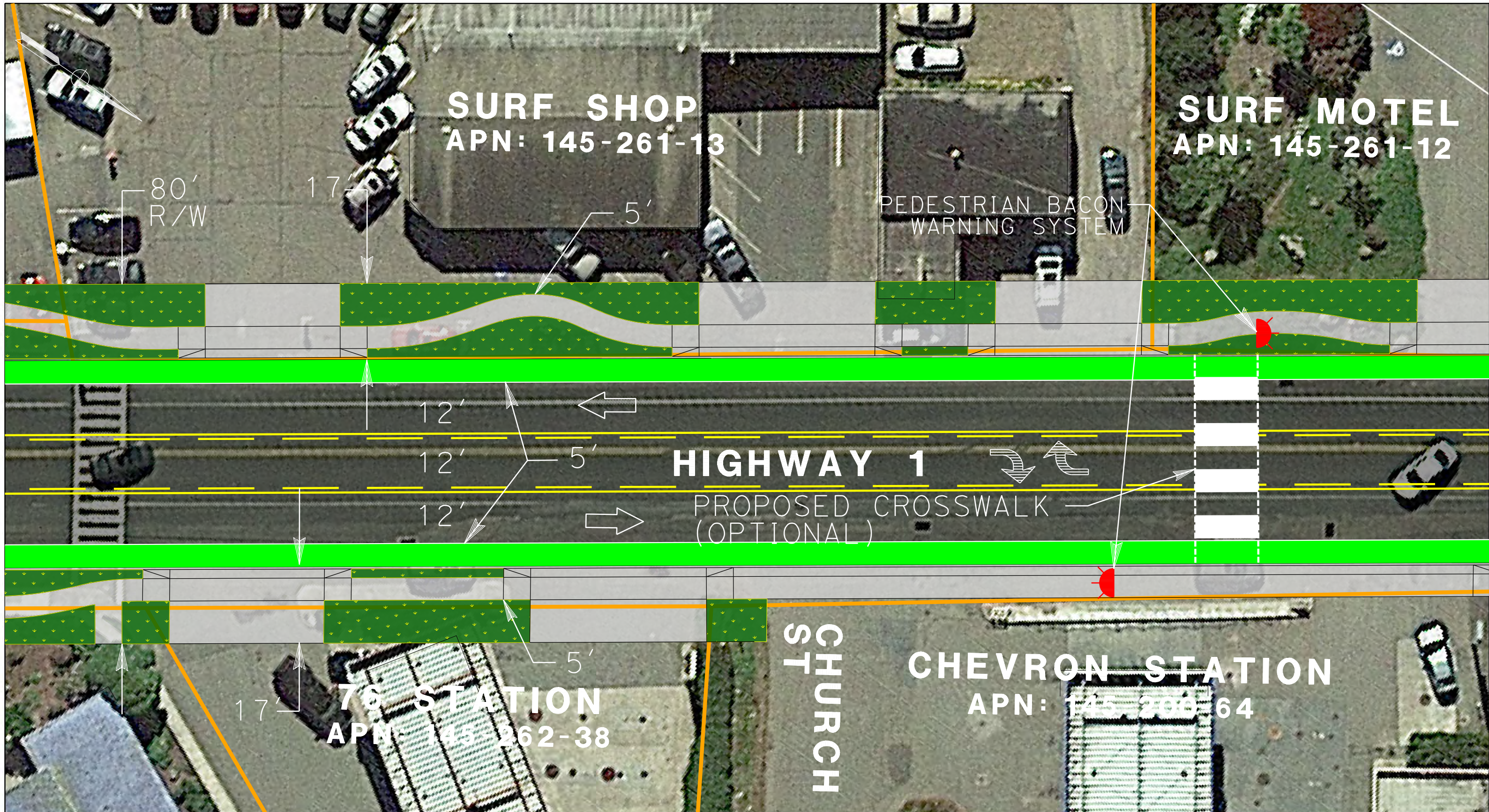
STRIPING

PRELIMINARY DESIGN  
FOR STUDY PURPOSES ONLY

SCALE 1:20FT





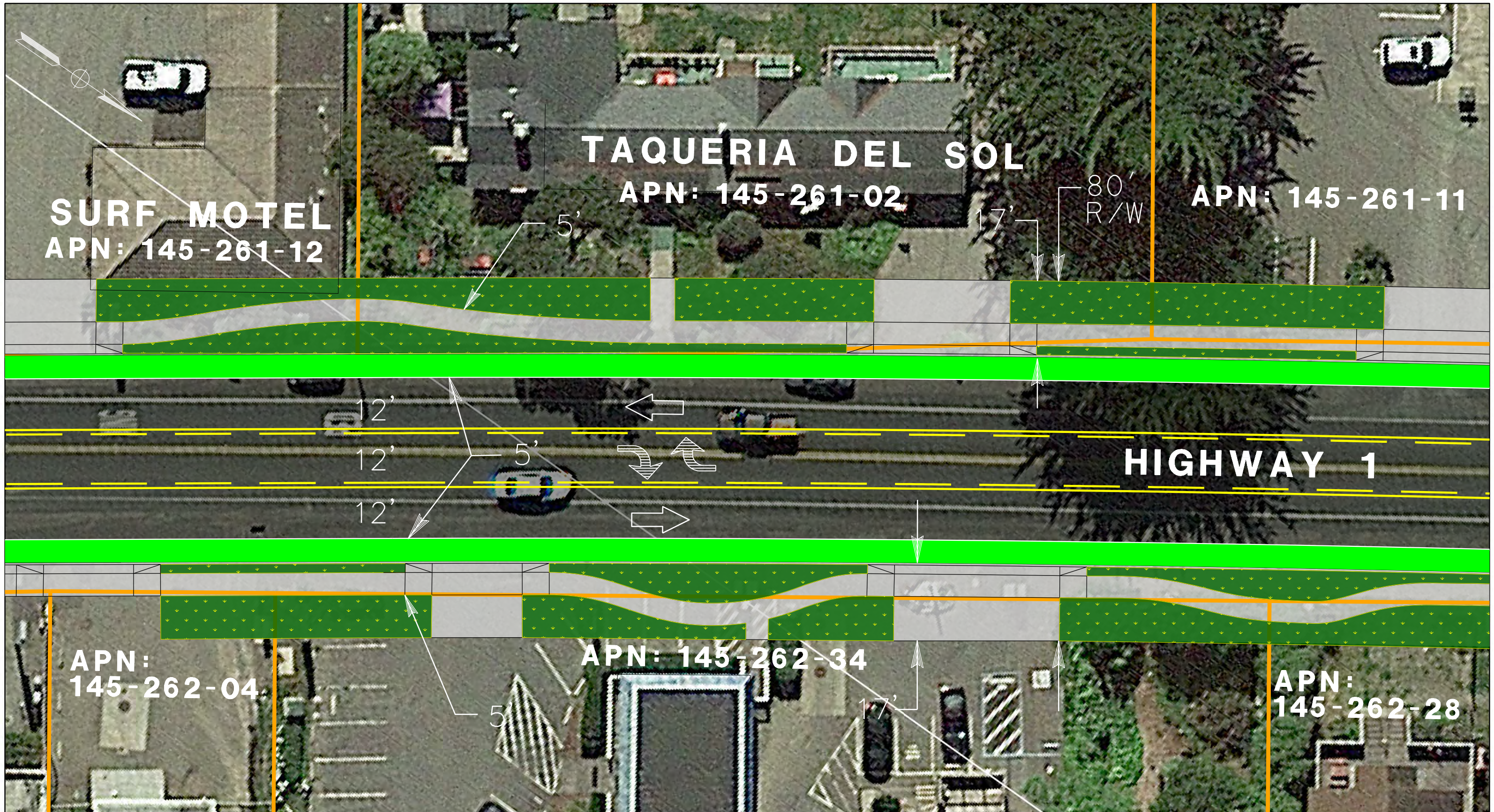


 DECOMPOSED GRANITE PATH	 BIKE LANE	 FUTURE TRAIL	GUALALA TOWNPLAN ALTERNATIVE PLAN VIEW DISPLAY G-3
 PAVEMENT	 POTENTIAL FUTURE CHARGING STATION		
 LANDSCAPE	 EXIST RIGHT OF WAY (R/W)		PRELIMINARY DESIGN FOR STUDY PURPOSES ONLY
 SIDEWALK	 STRIPING		

SCALE 1:20FT

20 0 20 40





DECOMPOSED GRANITE PATH

BIKE LANE

FUTURE TRAIL

GUALALA TOWNPLAN ALTERNATIVE  
PLAN VIEW DISPLAY G-4

PAVEMENT

POTENTIAL FUTURE CHARGING STATION

LANDSCAPE

EXIST RIGHT OF WAY (R/W)

SIDEWALK

STRIPING

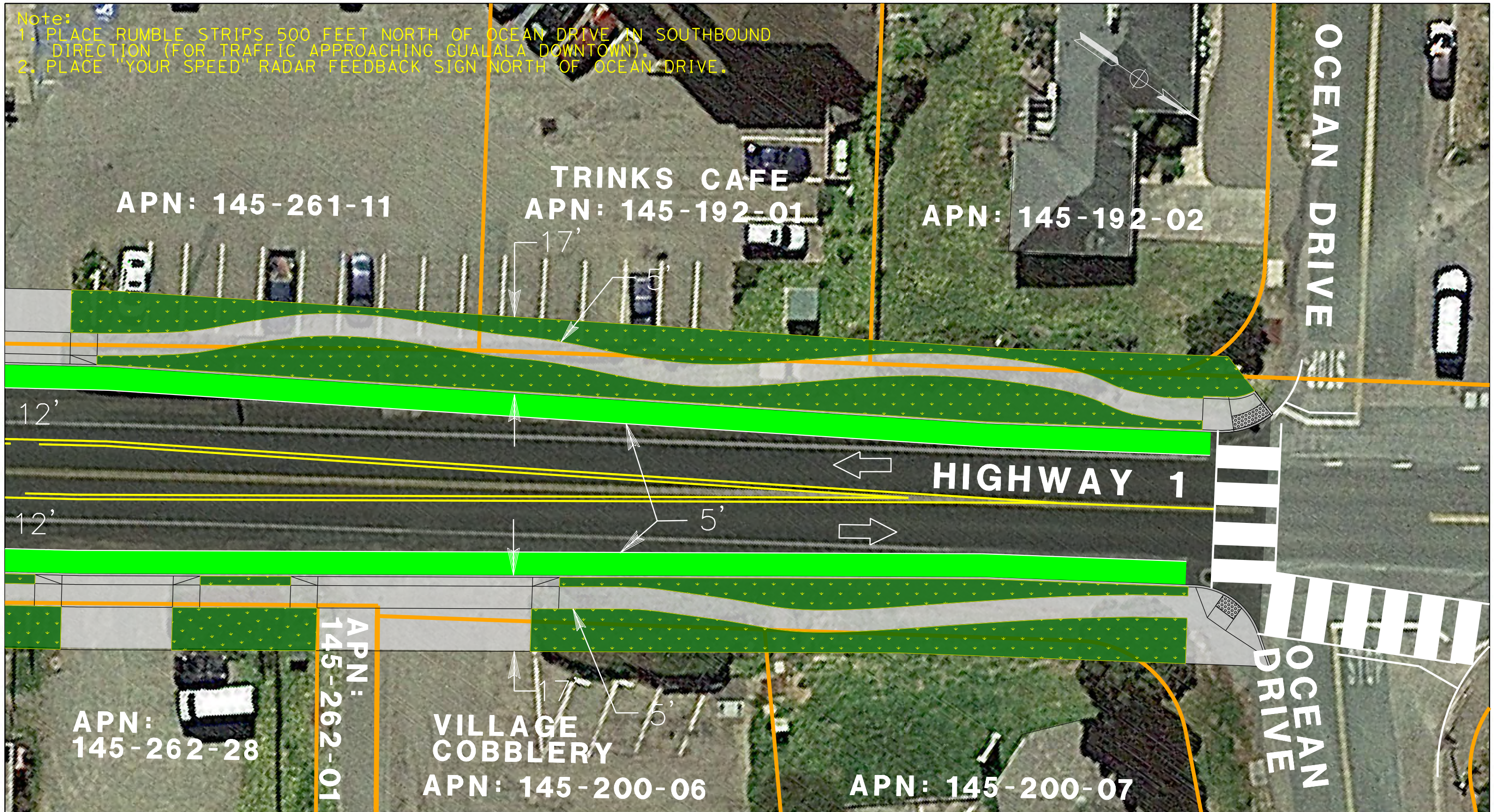
PRELIMINARY DESIGN  
FOR STUDY PURPOSES ONLY

SCALE 1:20FT





Note:  
 1. PLACE RUMBLE STRIPS 500 FEET NORTH OF OCEAN DRIVE IN SOUTHBOUND DIRECTION (FOR TRAFFIC APPROACHING GUALALA DOWNTOWN).  
 2. PLACE "YOUR SPEED" RADAR FEEDBACK SIGN NORTH OF OCEAN DRIVE.



DECOMPOSED GRANITE PATH

BIKE LANE

FUTURE TRAIL

GUALALA TOWNPLAN ALTERNATIVE  
 PLAN VIEW DISPLAY G-5

PAVEMENT

POTENTIAL FUTURE CHARGING STATION

LANDSCAPE

EXIST RIGHT OF WAY (R/W)

SIDEWALK

STRIPING

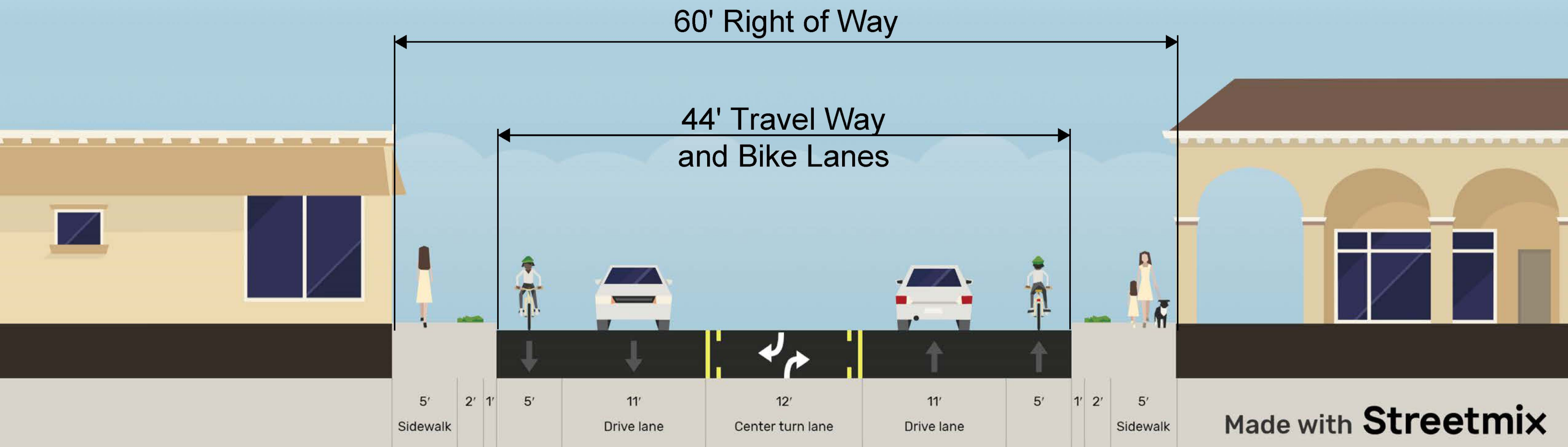
SCALE 1:20FT



PRELIMINARY DESIGN  
 FOR STUDY PURPOSES ONLY

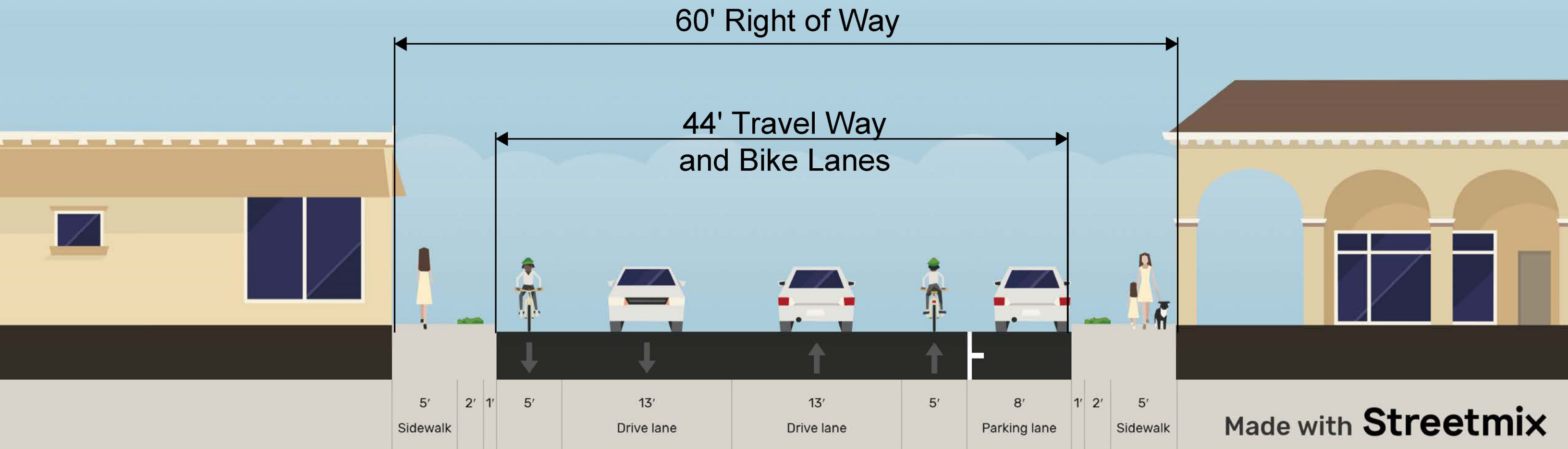


# ALT 4A - CENTER ST. TO CHURCH ST.





# ALT 4A - CHURCH ST. TO OCEAN DR.








Made with **Streetmix**



Note:  
 1. PLACE RUMBLE STRIPS 500 FEET SOUTH OF CENTER STREET  
 IN NORTHBOUND DIRECTION (FOR TRAFFIC APPROACHING GUALALA DOWNTOWN).  
 2. PLACE "YOUR SPEED" RADAR FEEDBACK SIGN SOUTH OF CENTER STREET.



 DECOMPOSED GRANITE PATH	 BIKE LANE	 FUTURE TRAIL
 PAVEMENT	 LANDSCAPE	 POTENTIAL FUTURE CHARGING STATION
 SIDEWALK		 EXIST RIGHT OF WAY (R/W)
		 STRIPING

SCALE 1:20FT

20 0 20 40

IMPROVEMENT PLAN ALT 4A  
 PLAN VIEW DISPLAY 4A-1

PRELIMINARY DESIGN  
 FOR STUDY PURPOSES ONLY



**HOTEL BREAKERS**  
APN: 145-261-14

**SURF MARKET**  
APN: 145-261-05

PEDESTRIAN BACON  
WARNING SYSTEM

60' R/W

5'  
2'

PROPOSED CROSSWALK  
**HIGHWAY 1**

11'  
12'  
11'  
5'

44'

**TROM  
ST**  
2-30

**UPPER CRUST  
PIZZERIA**  
APN: 145-262-10

**GUALALA HOTEL**  
APN: 145-262-22

**RED  
STELLA**  
APN:  
145-262-39

DECOMPOSED  
GRANITE PATH

BIKE LANE

FUTURE TRAIL

IMPROVEMENT PLAN ALT 4A  
PLAN VIEW DISPLAY 4A-2

PAVEMENT

POTENTIAL FUTURE CHARGING STATION

SCALE 1:20FT

LANDSCAPE

EXIST RIGHT OF WAY (R/W)

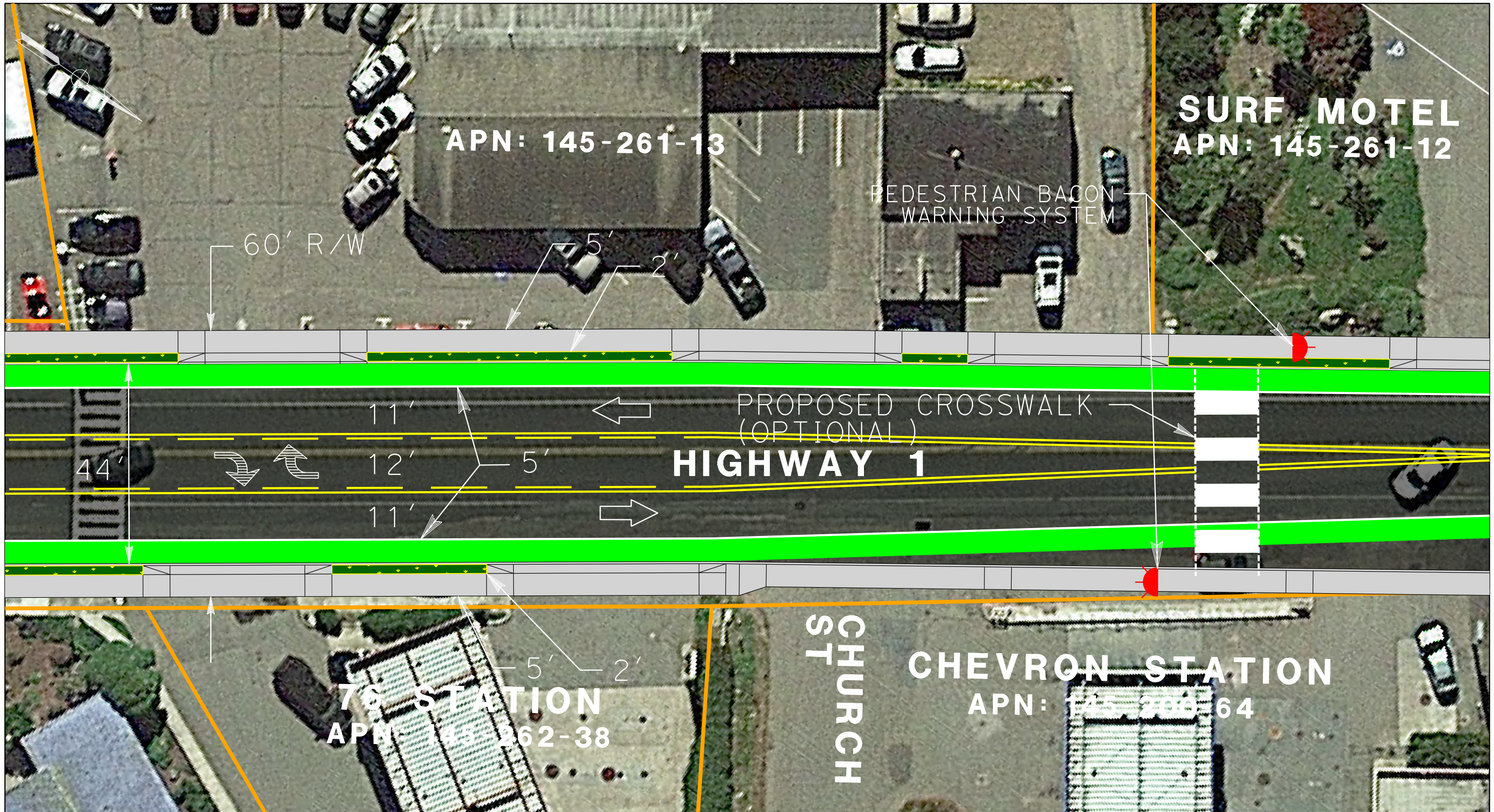
SIDEWALK

STRIPING

PRELIMINARY DESIGN  
FOR STUDY PURPOSES ONLY

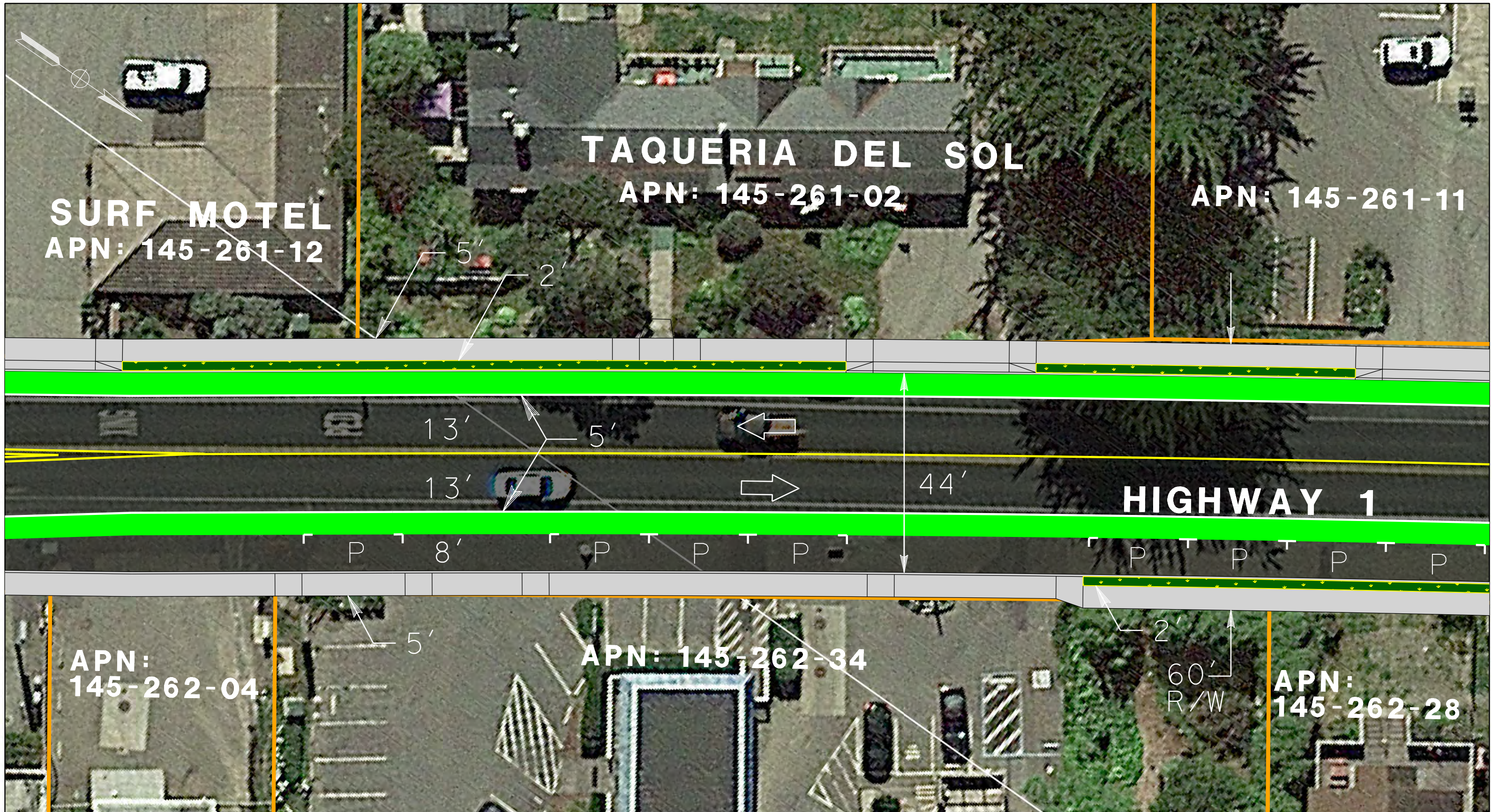






<p>DECOMPOSED GRANITE PATH</p>	<p>BIKE LANE</p>	<p>FUTURE TRAIL</p>	<p>IMPROVEMENT PLAN ALT 4A PLAN VIEW DISPLAY 4A-3</p>
<p>PAVEMENT</p>	<p>POTENTIAL FUTURE CHARGING STATION</p>		
<p>SCALE 1:20FT</p>	<p>LANDSCAPE</p>	<p>EXIST RIGHT OF WAY (R/W)</p>	<p>PRELIMINARY DESIGN FOR STUDY PURPOSES ONLY</p>
	<p>SIDEWALK</p>	<p>STRIPING</p>	





**SURF MOTEL**  
 APN: 145-261-12

**TAQUERIA DEL SOL**  
 APN: 145-261-02

APN: 145-261-11

**HIGHWAY 1**

APN: 145-262-04

APN: 145-262-34

APN: 145-262-28

DECOMPOSED GRANITE PATH

BIKE LANE

FUTURE TRAIL

IMPROVEMENT PLAN ALT 4A  
 PLAN VIEW DISPLAY 4A-4

PAVEMENT

POTENTIAL FUTURE CHARGING STATION

LANDSCAPE

EXIST RIGHT OF WAY (R/W)

SIDEWALK

STRIPING

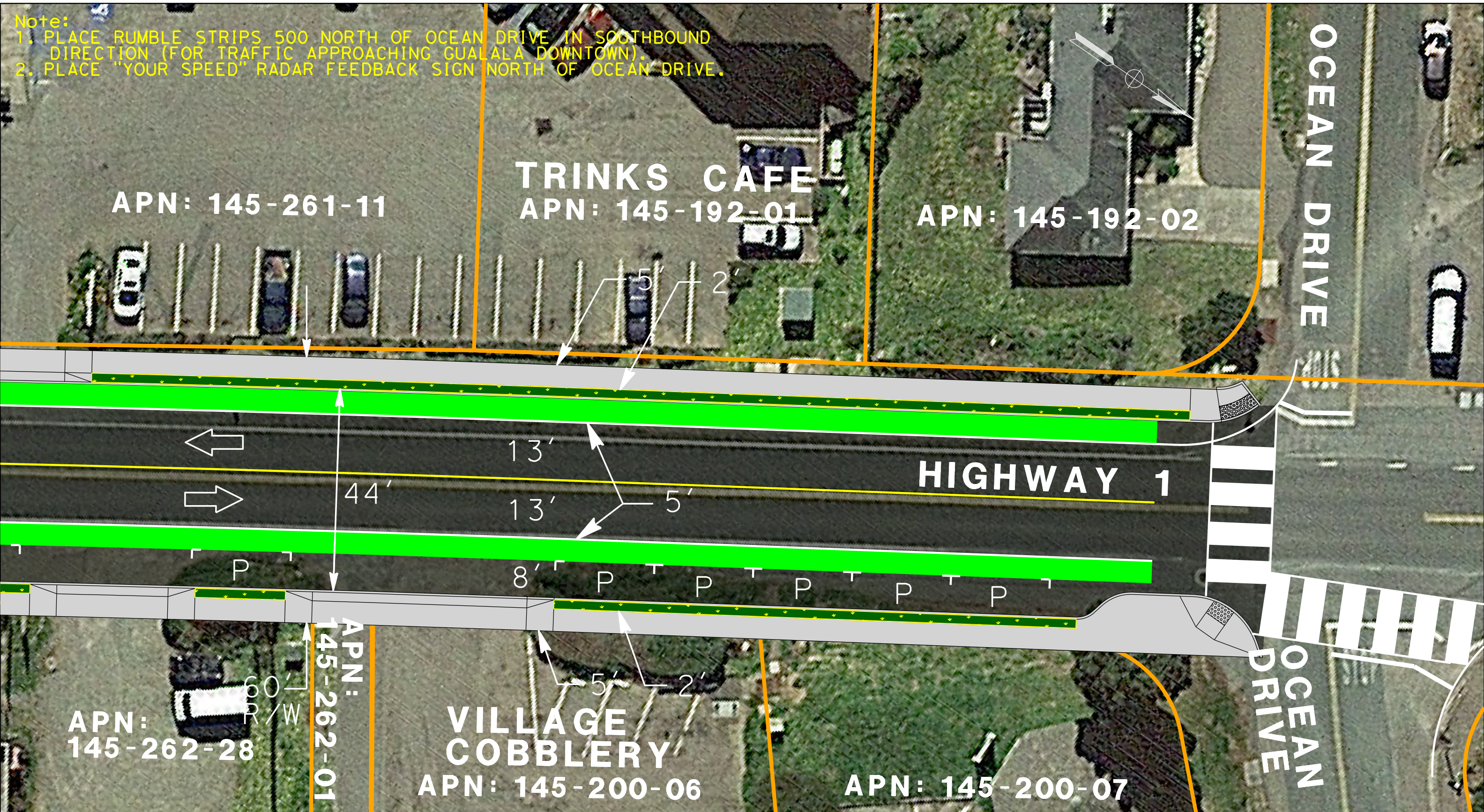
SCALE 1:20FT



PRELIMINARY DESIGN  
 FOR STUDY PURPOSES ONLY



Note:  
 1. PLACE RUMBLE STRIPS 500 NORTH OF OCEAN DRIVE IN SOUTHBOUND DIRECTION (FOR TRAFFIC APPROACHING GUALALA DOWNTOWN).  
 2. PLACE "YOUR SPEED" RADAR FEEDBACK SIGN NORTH OF OCEAN DRIVE.



DECOMPOSED GRANITE PATH	BIKE LANE	FUTURE TRAIL
PAVEMENT	LANDSCAPE	POTENTIAL FUTURE CHARGING STATION
SIDEWALK	STRIPING	EXIST RIGHT OF WAY (R/W)

SCALE 1:20FT

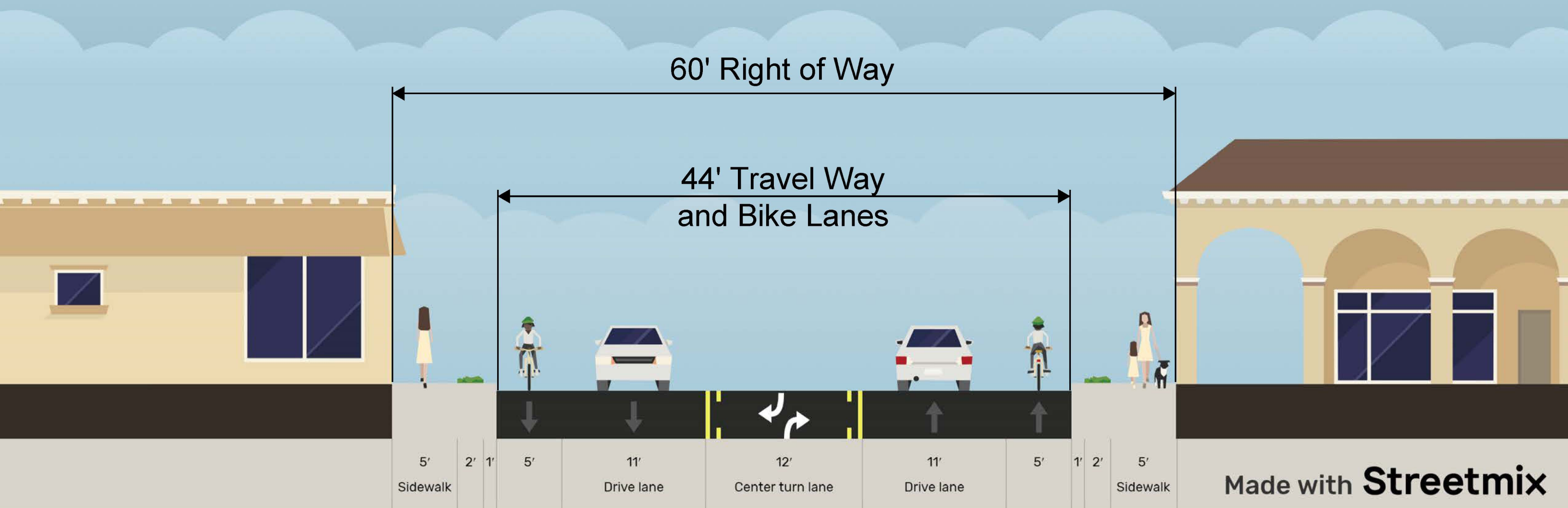
20 0 20 40

IMPROVEMENT PLAN ALT 4A  
 PLAN VIEW DISPLAY 4A-5

PRELIMINARY DESIGN  
 FOR STUDY PURPOSES ONLY



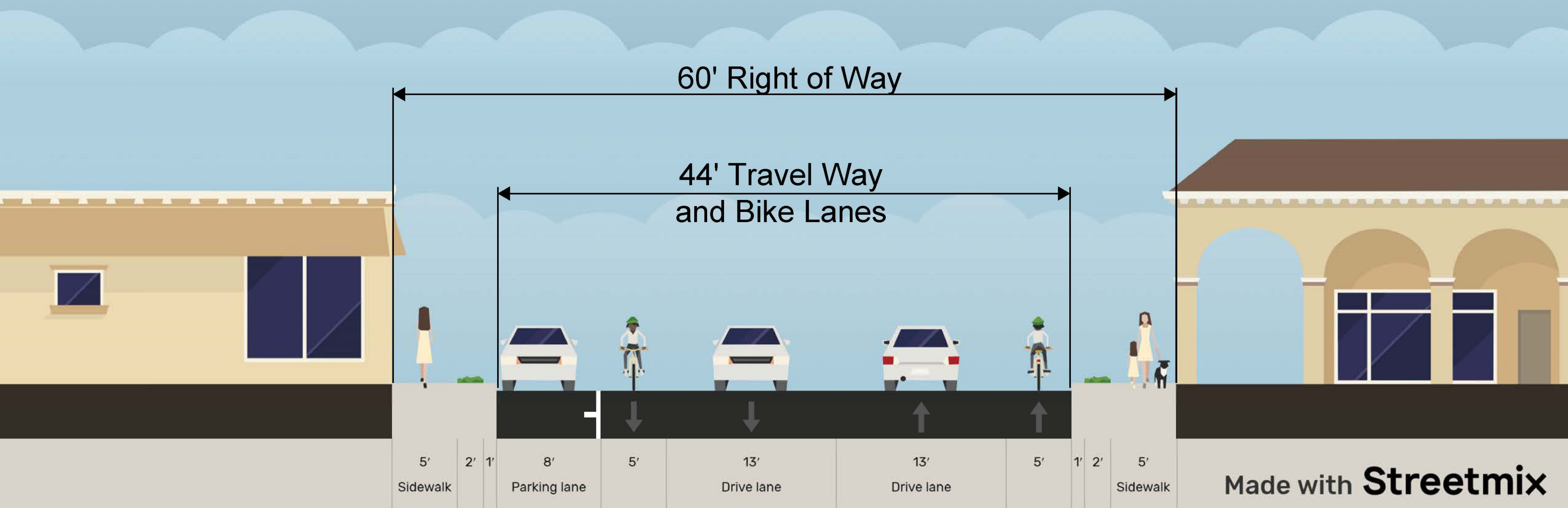
# ALT 4B - CENTER ST. TO CHURCH ST.



Made with **Streetmix**



# ALT 4B - CHURCH ST. TO OCEAN DR.









Made with **Streetmix**



Note:  
 1. PLACE RUMBLE STRIPS 500 FEET SOUTH OF CENTER STREET  
 IN NORTHBOUND DIRECTION (FOR TRAFFIC APPROACHING GUALALA DOWNTOWN).  
 2. PLACE YOUR SPEED VEHICLE SPEED FEEDBACK SIGN SOUTH OF CENTER STREET.



 DECOMPOSED GRANITE PATH	 BIKE LANE	 FUTURE TRAIL	IMPROVEMENT PLAN ALT 4B PLAN VIEW DISPLAY 4B-1  PRELIMINARY DESIGN FOR STUDY PURPOSES ONLY
 PAVEMENT	 LANDSCAPE	 POTENTIAL FUTURE CHARGING STATION	
SCALE 1:20FT	 SIDEWALK	 EXIST RIGHT OF WAY (R/W)	
	 STRIPING		



**HOTEL BREAKERS**  
APN: 145-261-14

**SURF MARKET**  
APN: 145-261-05

PEDESTRIAN BACON  
WARNING SYSTEM

60' R/W

**HIGHWAY 1**

PROPOSED CROSSWALK

**TROM  
ST**  
2-30

**UPPER CRUST  
PIZZERIA**  
APN: 145-262-10

**GUALALA HOTEL**  
APN: 145-262-22

**RED  
STELLA**  
APN:  
145-262-39

DECOMPOSED  
GRANITE PATH

BIKE LANE

FUTURE TRAIL

IMPROVEMENT PLAN ALT 4B  
PLAN VIEW DISPLAY 4B-2

PAVEMENT

POTENTIAL FUTURE CHARGING STATION

SCALE 1:20FT

LANDSCAPE

EXIST RIGHT OF WAY (R/W)

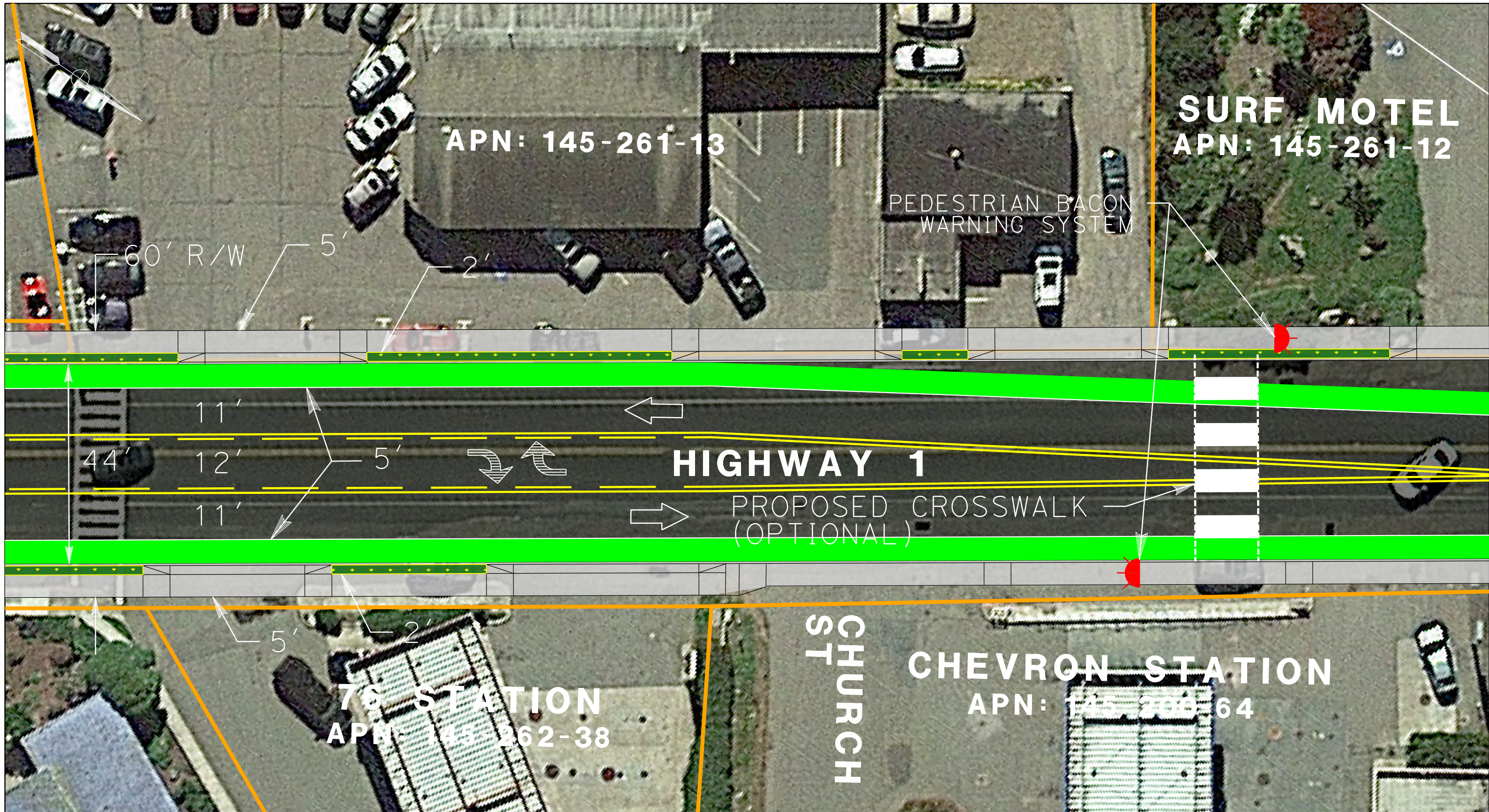
SIDEWALK

STRIPING

PRELIMINARY DESIGN  
FOR STUDY PURPOSES ONLY

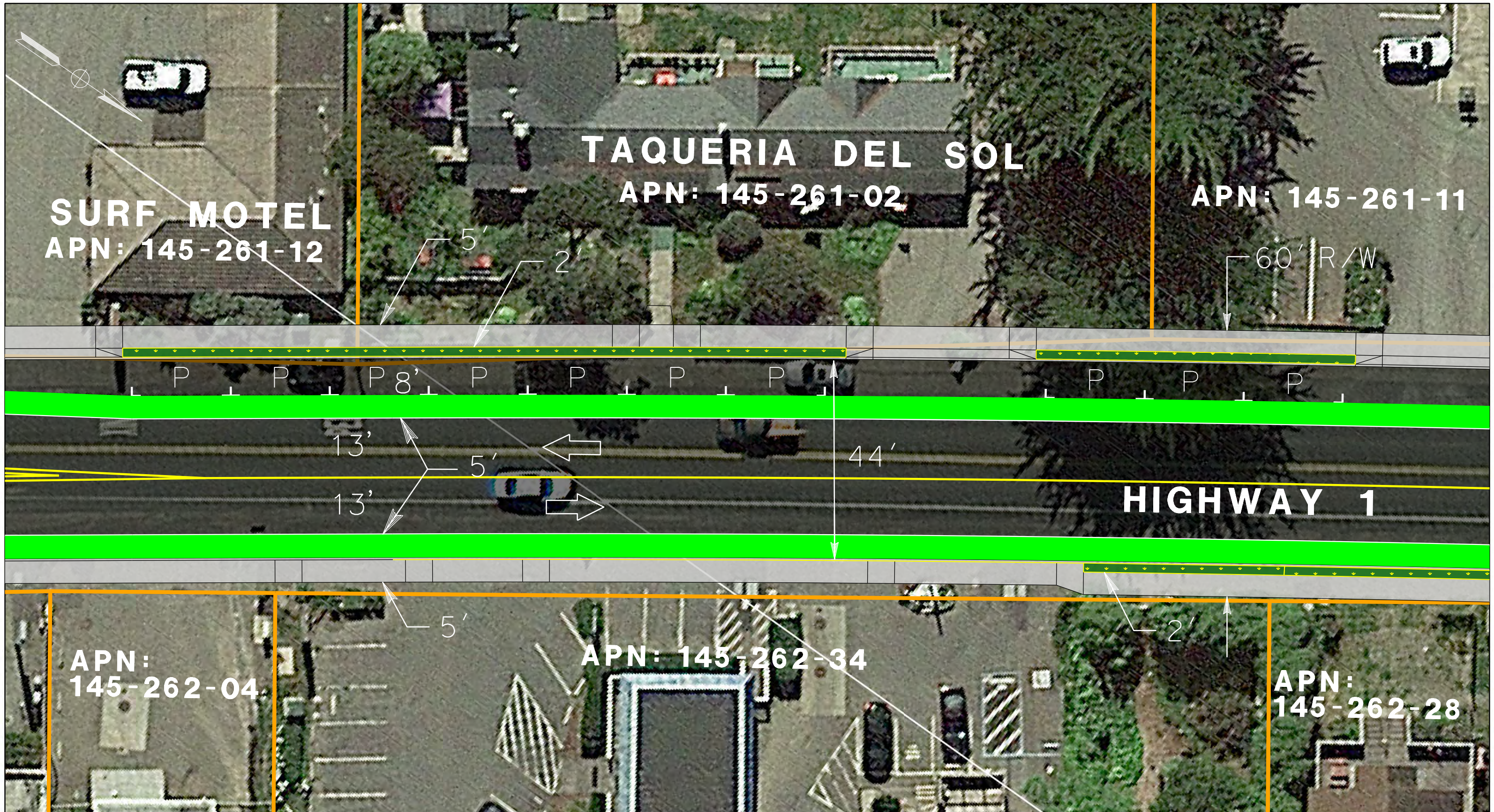
20 0 20 40





 DECOMPOSED GRANITE PATH  SCALE 1:20FT 20 0 20 40	 BIKE LANE  PAVEMENT  LANDSCAPE  SIDEWALK	 FUTURE TRAIL  POTENTIAL FUTURE CHARGING STATION  EXIST RIGHT OF WAY (R/W)  STRIPING	IMPROVEMENT PLAN ALT 4B PLAN VIEW DISPLAY 4B-3 PRELIMINARY DESIGN FOR STUDY PURPOSES ONLY
--	--	---	--





**SURF MOTEL**  
 APN: 145-261-12

**TAQUERIA DEL SOL**  
 APN: 145-261-02

APN: 145-261-11

**HIGHWAY 1**

APN:  
 145-262-04

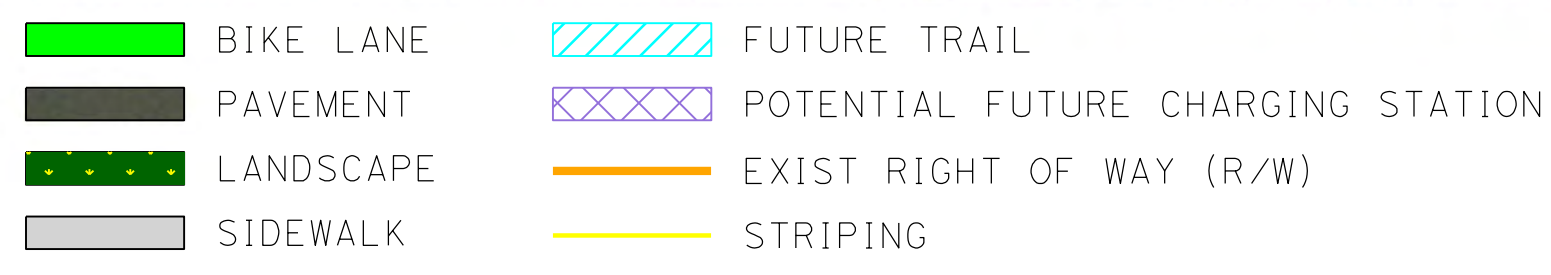
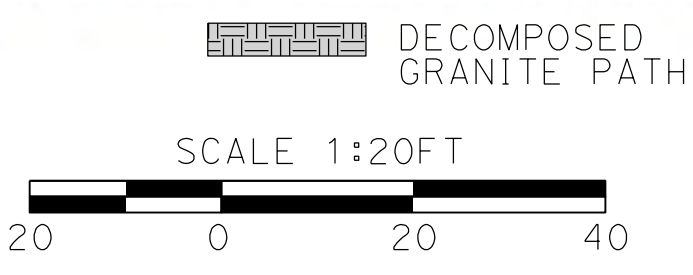
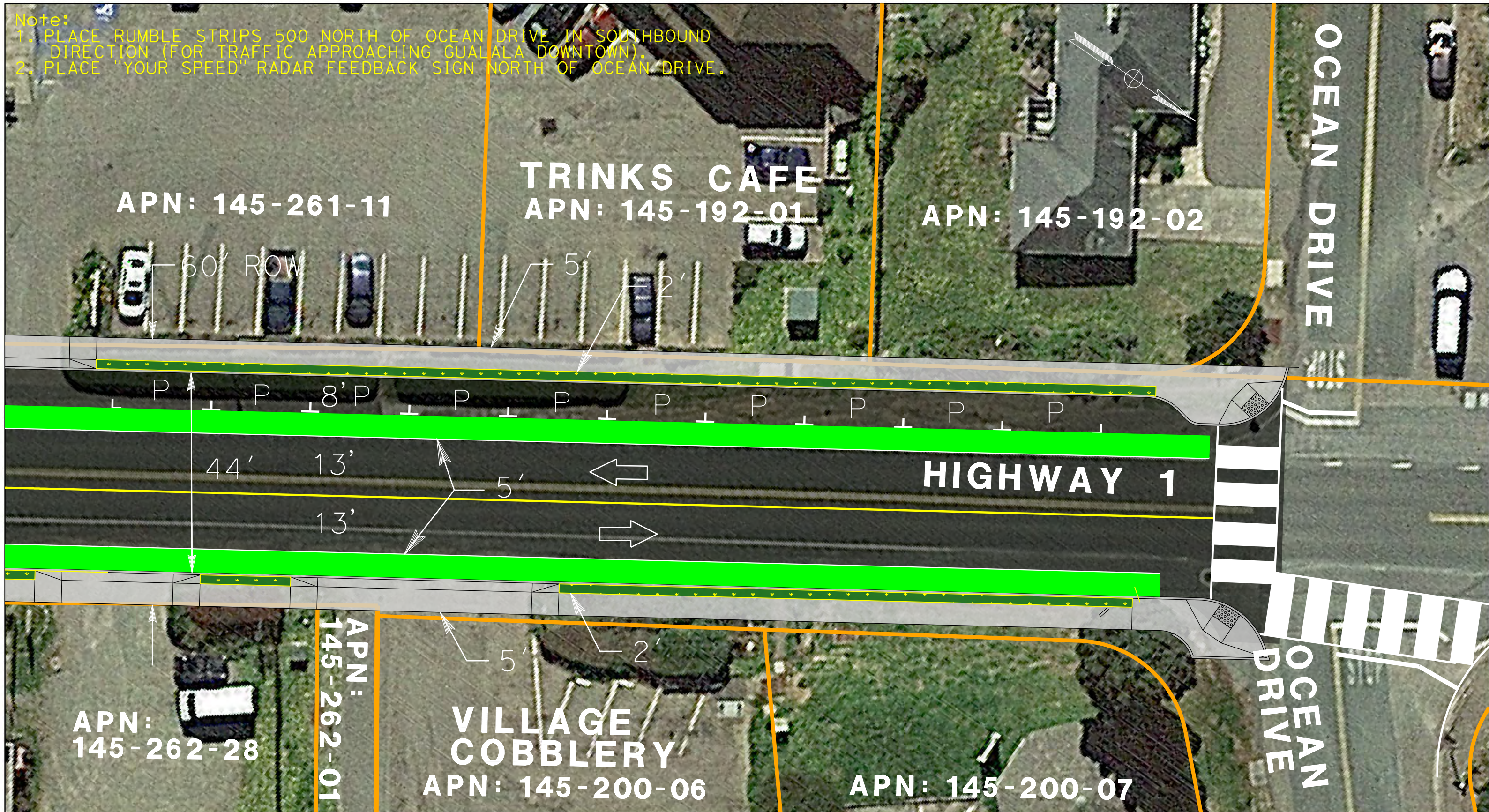
APN: 145-262-34

APN:  
 145-262-28

<p>DECOMPOSED GRANITE PATH</p>	<p>BIKE LANE</p>	<p>FUTURE TRAIL</p>	<p>IMPROVEMENT PLAN ALT 4B          PLAN VIEW DISPLAY 4B-4</p>
<p>PAVEMENT</p>	<p>POTENTIAL FUTURE CHARGING STATION</p>		
<p>SCALE 1:20FT</p>	<p>LANDSCAPE</p>	<p>EXIST RIGHT OF WAY (R/W)</p>	<p>PRELIMINARY DESIGN          FOR STUDY PURPOSES ONLY</p>
	<p>SIDEWALK</p>	<p>STRIPING</p>	



Note:  
 1. PLACE RUMBLE STRIPS 500 NORTH OF OCEAN DRIVE IN SOUTHBOUND DIRECTION (FOR TRAFFIC APPROACHING GUALALA DOWNTOWN).  
 2. PLACE "YOUR SPEED" RADAR FEEDBACK SIGN NORTH OF OCEAN DRIVE.



IMPROVEMENT PLAN ALT 4B  
 PLAN VIEW DISPLAY 4B-5  
 PRELIMINARY DESIGN  
 FOR STUDY PURPOSES ONLY